


Project Description

The Clinton & Miles Safe Routes To Schools Community Connections Project will add new sidewalks and close sidewalk gaps.

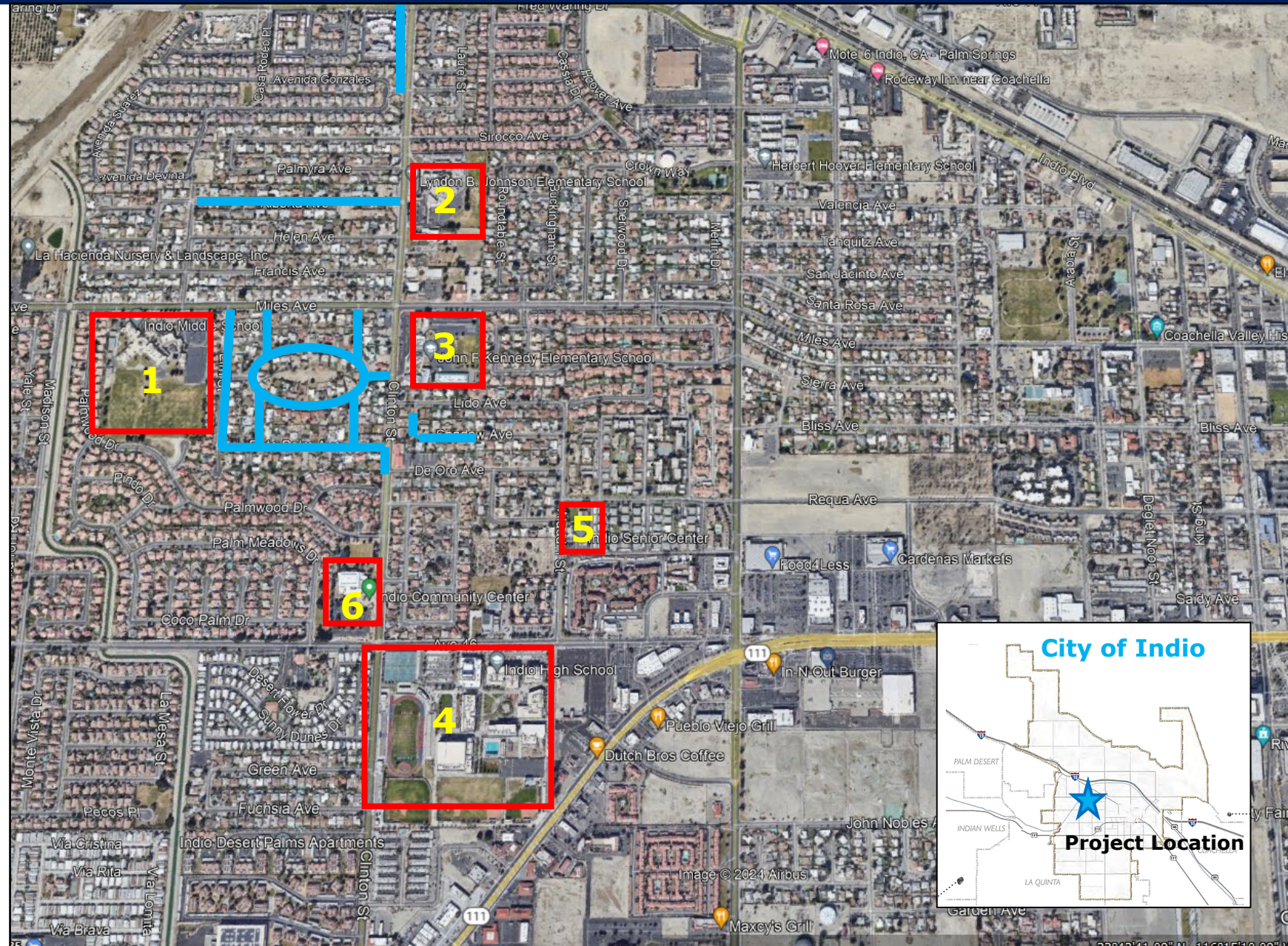
The project will be located on eight streets in the Clinton and Miles neighborhood.

Legend

 New sidewalk segment to be constructed as part of ATP project

 School or Community Connection

1. Indio Middle School
2. Johnson Elementary School
3. Kennedy Elementary School
4. Indio High School
5. Indio Senior Center
6. Indio Community Center





Clinton & Miles Avenue SRTS Community Connections Project

Photos of Existing Conditions: Birch Street

Residents must walk in the dirt right-of-way or navigate around vehicles parked on the side of Birch Street (top photo).

Sidewalks from Miles Avenue end abruptly at the corner of Birch Street (bottom photo). Cars park next to the corner making it difficult for pedestrians to navigate.

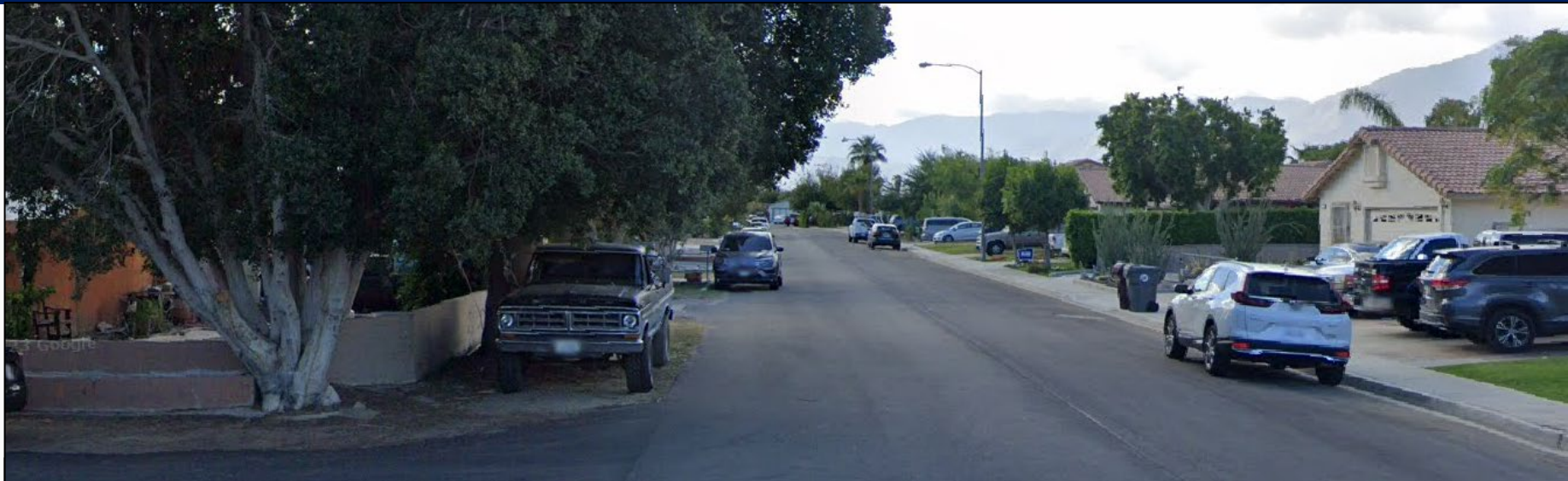




Clinton & Miles Avenue SRTS Community Connections Project

Photos of Existing Conditions: Elm Street

Elm Street exemplifies the need for sidewalks. The west side of Elm has sidewalks, but the east side does not (top photo). Pedestrians face unsafe and high stress conditions on the east side of the street as a result. Sidewalks from Miles Avenue end at the corner, and do not have ADA compliant curb ramps (bottom photo).





Clinton & Miles Avenue SRTS Community Connections Project

Photos of Existing Conditions: Palo Verde Street

Visibility is difficult on Palo Verde because of the street's curve. Corners are eroded, creating uneven width of the roadway (top right).

Narrow roadways and lack of off-street parking mean that pedestrians share the roadway with vehicles (bottom right).





Clinton & Miles Avenue SRTS Community Connections Project

Photos of Existing Conditions: Alberta Street

Sidewalks abruptly end at the corner of Alberta Street and Clinton Street (visible in all photos).

The lack of sidewalks on Alberta means pedestrian must share the roadway with vehicular traffic, creating an unsafe and high stress environment (top photo).





Clinton & Miles Avenue SRTS Community Connections Project

Photos of Existing Conditions: Clinton Street

The sidewalk on the corner of Clinton and Palo Verde has poor visibility, is narrow, and lacks an ADA compliant curb cut (top photo).



A sidewalk gap on busy Clinton Street (ADT 13,294) forces pedestrians to walk in a high stress, unsafe environment. Pedestrians share an uneven width shoulder when walking (bottom photo).





Clinton & Miles Avenue SRTS Community Connections Project

Photos of Existing Conditions: Date Palm Street

On street parking on both sides of Date Palm Street forces pedestrians into the vehicular lane (top right).

The corner of Date Palm and Clinton lacks a curb cut (bottom right), and there is a sidewalk gap just beyond the corner (bottom left).

