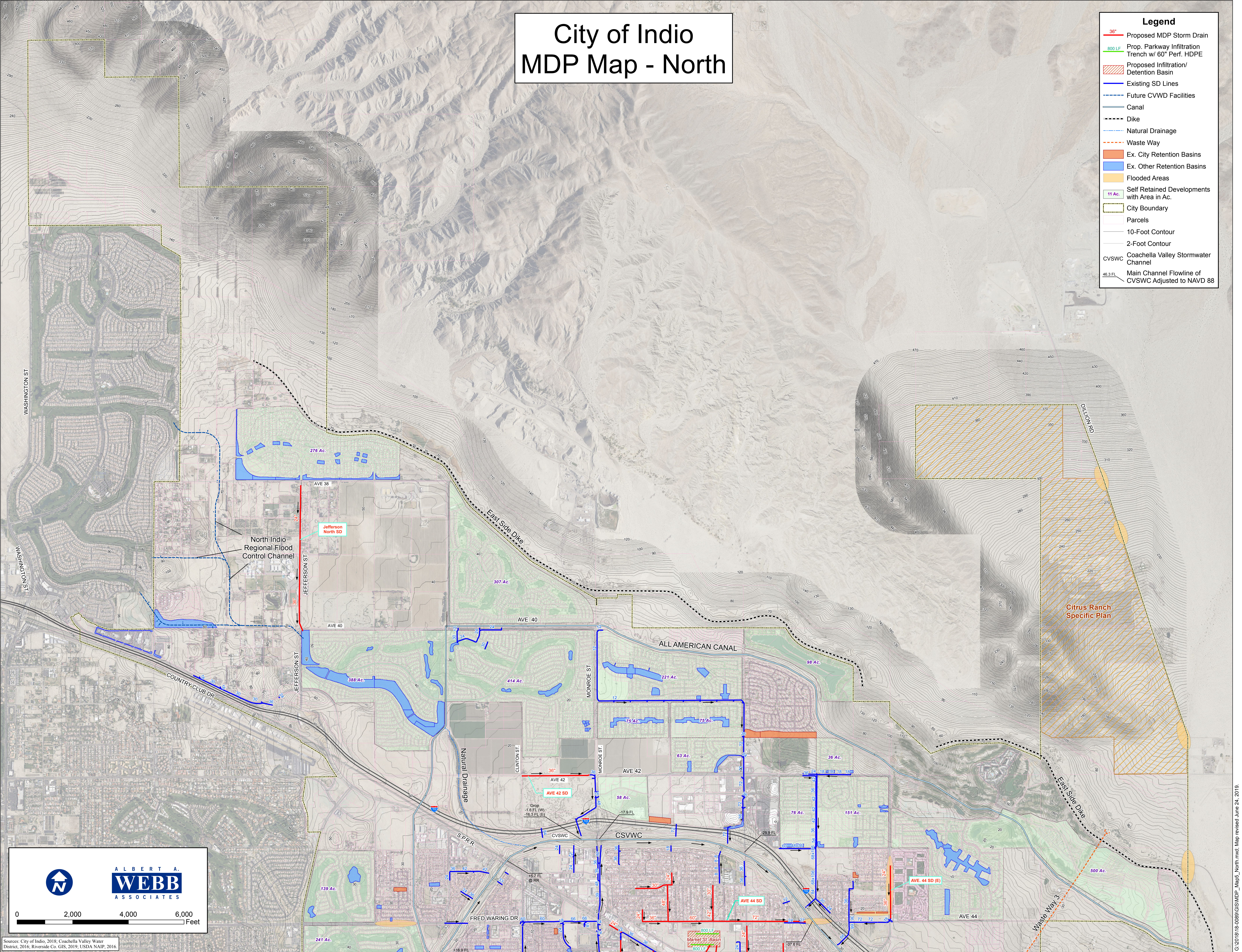


# City of Indio MDP Map - North

- Legend**
- 36" Proposed MDP Storm Drain
  - 800 LF Prop. Parkway Infiltration Trench w/ 60" Perf. HDPE
  - Proposed Infiltration/ Detention Basin
  - Existing SD Lines
  - Future CVWD Facilities
  - Canal
  - Dike
  - Natural Drainage
  - Waste Way
  - Ex. City Retention Basins
  - Ex. Other Retention Basins
  - Flooded Areas
  - Self Retained Developments with Area in Ac.
  - City Boundary
  - Parcels
  - 10-Foot Contour
  - 2-Foot Contour
  - CVSWC Coachella Valley Stormwater Channel
  - 46.3 FL Main Channel Flowline of CVSWC Adjusted to NAVD 88



**ALBERT A. WEBB ASSOCIATES**

0      2,000      4,000      6,000  
Feet

Source: City of Indio, 2018; Coachella Valley Water District, 2016; Riverside Co. GIS, 2019; USDA NAIP, 2016.