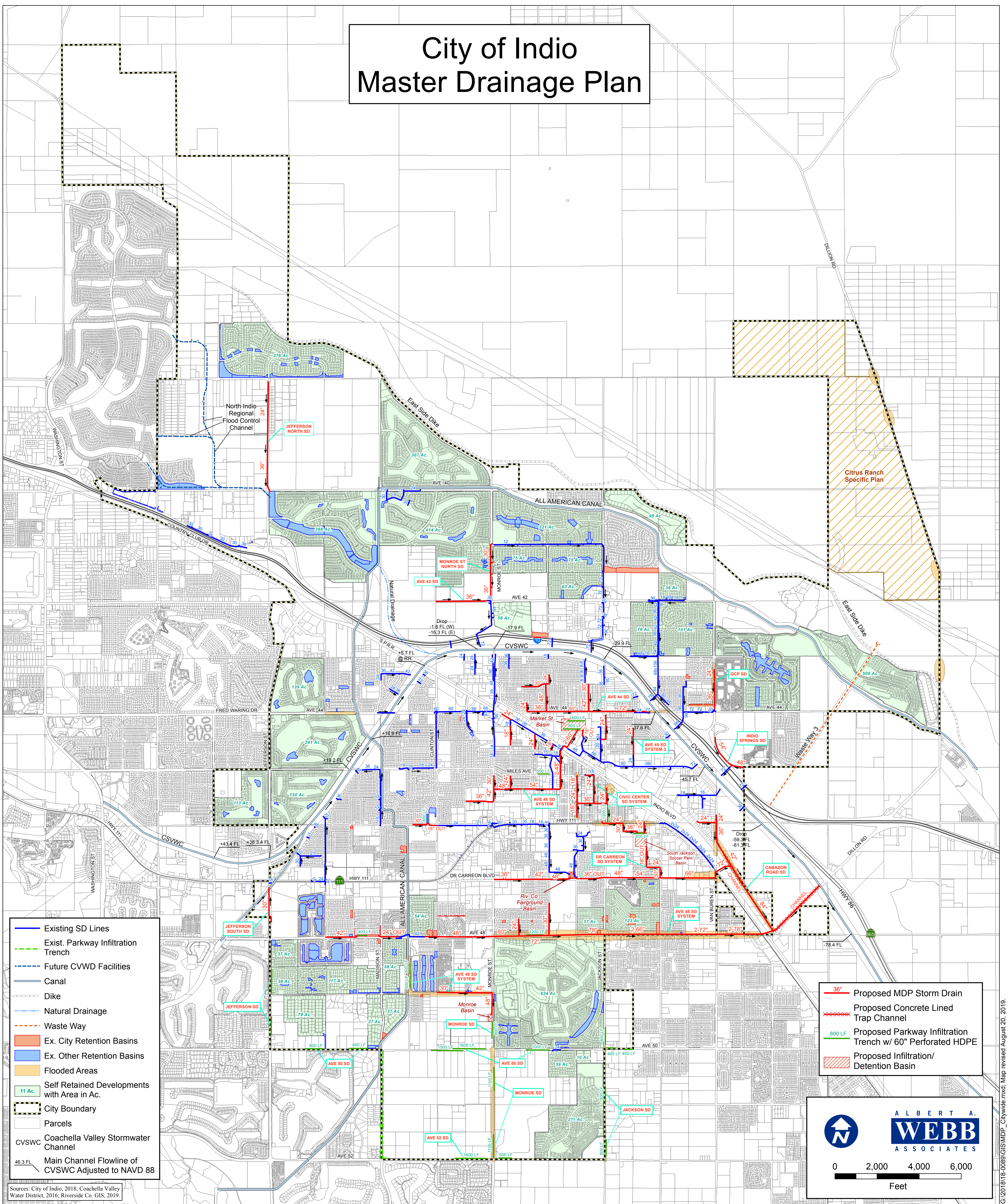



City of Indio Master Drainage Plan



- Existing SD Lines
- - - Exist. Parkway Infiltration Trench
- - - Future CVWD Facilities
- Canal
- Dike
- - - Natural Drainage
- - - Waste Way
- Ex. City Retention Basins
- Ex. Other Retention Basins
- Flooded Areas
- 11 Ac. Self Retained Developments with Area in Ac.
- City Boundary
- Parcels
- cvswc Coachella Valley Stormwater Channel
- 46.3 FL Main Channel Flowline of CVSWC Adjusted to NAVD 88

- 36" Proposed MDP Storm Drain
- - - Proposed Concrete Lined Trap Channel
- 800 LF Proposed Parkway Infiltration Trench w/ 60" Perforated HDPE
- - - Proposed Infiltration/ Detention Basin



**ALBERT A.
WEBB
ASSOCIATES**

0 2,000 4,000 6,000
Feet

Sources: City of Indio, 2018; Coachella Valley Water District, 2016; Riverside Co. GIS, 2019.