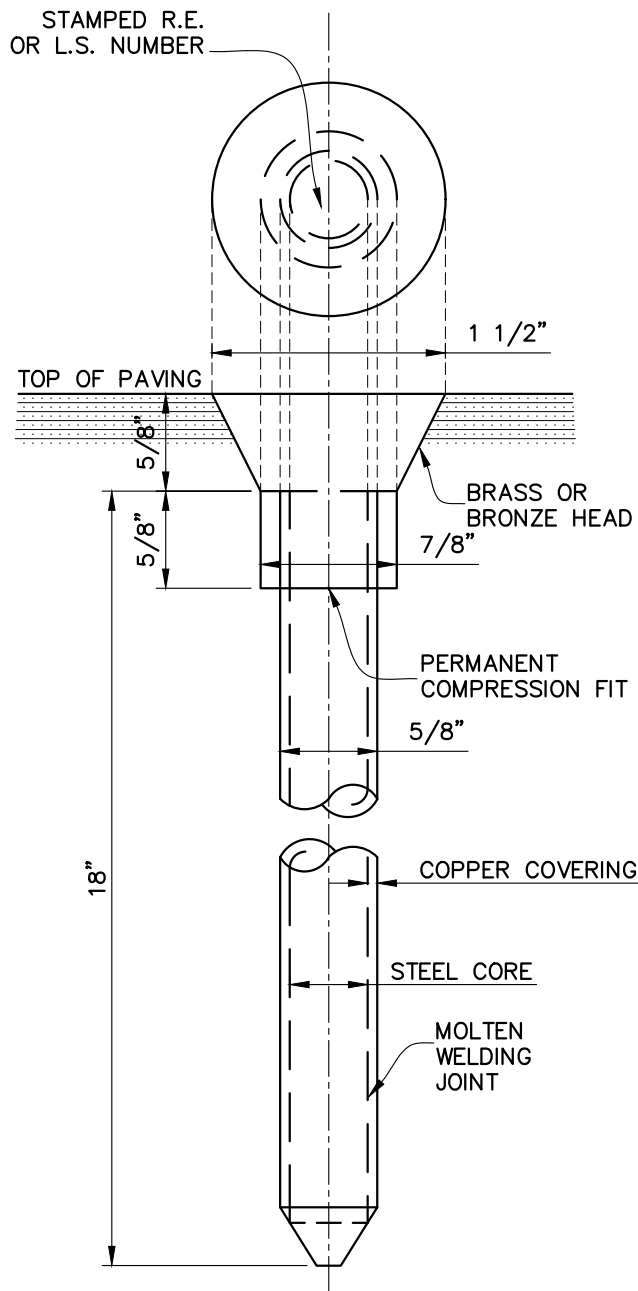


L:\Public Works - Engineering Standards\INDIO-512 (Sheet 1 of 2) 5/19/2016 12:38 PM



**TYPE "1" MONUMENT**

NOTE: SEE STD 512, SHEET 2 OF 2, FOR MONUMENT DESCRIPTION AND SCHEDULE



<i>Juan Raya</i>		05/18/16
JUAN RAYA, P.E. CITY ENGINEER RCE 68510		DATE
REV.	DRAWN BY:	APP'D:
		DATE:



**MONUMENT DETAILS AND STANDARDS**

STANDARD PLAN No.: **512**  
SHEET 1 OF 2

MAY 2016

## MONUMENT DESCRIPTION AND SCHEDULE

TYPE "1": TYPE "1" MONUMENTS SHALL BE OF THE TYPE SHOWN ON STD 512, SHEET 1 OF 2. TYPE "1" MONUMENTS SHALL BE USED FOR STREET INTERSECTIONS, CENTERLINE CONTROL INCLUDING ANGLE POINTS AND BEGINNINGS AND ENDINGS OF CURVES, OR ANY OTHER LOCATION WHERE PERMANENT SURVEY POINTS ARE IN PAVED SURFACES.

TYPE "2": TYPE "2" MONUMENTS ARE TO BE TWO INCH (INSIDE DIAMETER) IRON PIPE THIRTY INCHES (30") LONG. A METAL DISC OR BRASS CAP BEARING THE REGISTERED CIVIL ENGINEER OR LAND SURVEYOR NUMBER SHALL BE SECURELY AFFIXED TO THE TOP OF THE PIPE. THE TOP SURFACE OF THE MONUMENT SHALL BE SET AT OR WITHIN 12 INCHES OF THE FINISH SURFACE. TYPE "2" MONUMENTS SHALL BE USED FOR MAP BOUNDARY CONTROL UNLESS TYPE "1" WOULD BE MORE APPROPRIATE.

TYPE "3": TYPE "3" MONUMENTS ARE TO BE ONE INCH (INSIDE DIAMETER) IRON PIPE THIRTY INCHES (30") LONG. A METAL DISC OR BRASS CAP BEARING THE REGISTERED CIVIL ENGINEER OR LAND SURVEYOR NUMBER SHALL BE SECURELY AFFIXED TO THE TOP OF THE PIPE. THE TOP SURFACE OF THE MONUMENT SHALL BE SET AT OR WITHIN 12 INCHES OF THE FINISH SURFACE. TYPE "3" MONUMENTS SHALL BE USED FOR INTERIOR SUBDIVISION LOT CORNERS.

TYPE "4": TYPE "4" MONUMENTS SHALL CONSIST OF A LEAD PLUG OR A STEEL PIN WITH A METAL I.D. DISK SET IN THE TOP OF PERMANENT CONCRETE STRUCTURES SUCH AS CURB, OR MASONRY WALL. COMMONLY CALLED "LEAD & TAG" MONUMENTS, THEY MAY BE USED IN LIEU OF THE FRONT LOT CORNERS, SET IN THE TOP OF CURB ON THE PROLONGATION OF THE SIDE LOT LINES. THEY ALSO MAY BE USED IN LIEU OF REAR PROPERTY CORNERS WHERE THERE IS A MASONRY WALL CLOSE TO THE REAR PROPERTY LINE. THE TAGS WOULD BE SET ON BOTH SIDES OF THE WALL AND NOTED ON THE SUBDIVISION MAP AS "POINTS ON LINE", UNLESS THE TRUE CORNER IS COEXISTENT WITH THE WALL AND THE TAG CAN GO ON TOP OF THE WALL.

ALTERNATIVE MONUMENTS: WITH ADVANCE PERMISSION FROM THE CITY ENGINEER, SOME ALTERNATIVE MONUMENTS MAY BE ACCEPTABLE IF THEY MEET THE FOLLOWING CRITERIA:

- 1.) MONUMENT MUST BE LOCATABLE WITH A STANDARD FERROUS METAL DETECTOR
- 2.) LICENSE NUMBERS MUST BE ON AN ATTACHED BRASS DISK OR STAMPED INTO BRASS CAP (PLASTIC CAPS OR PLUGS ARE NOT ACCEPTABLE)
- 3.) MONUMENT MUST BE A DURABLE METAL, RUST RESISTANT, AND ABLE TO RESIST ANY CASUAL MOVEMENT OR WITHDRAWAL ATTEMPTS.

NOTE: SEE STANDARD 512, SHEET 1 OF 2, FOR MONUMENT DETAILS.  
SEE STANDARD 510 FOR TIE-OUT STANDARDS AND STANDARD 511 FOR MONUMENTATION LOCATIONS.

L:\Public Works - Engineering Standards\INDIO-512 (Sheet 2 of 2) 5/19/2016 12:37 PM



*Juan Raya* 05/18/16  
DATE

JUAN RAYA, P.E.  
CITY ENGINEER  
RCE 68510

REV.	DRAWN BY:	APP'D:	DATE:



**MONUMENT DETAILS  
AND STANDARDS**

---

STANDARD PLAN No.: **512**  
SHEET 2 OF 2

MAY 2016