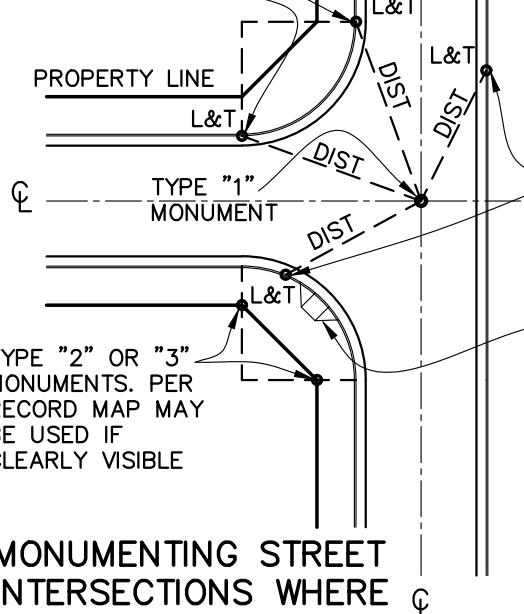


IF TYPE "4" MONUMENTS ARE SET IN CURB AS OFFSET POINTS PER THE RECORD MAP, THEN THEY COULD BE USED AS TIE POINTS WITHOUT NEEDING A CORNER RECORD

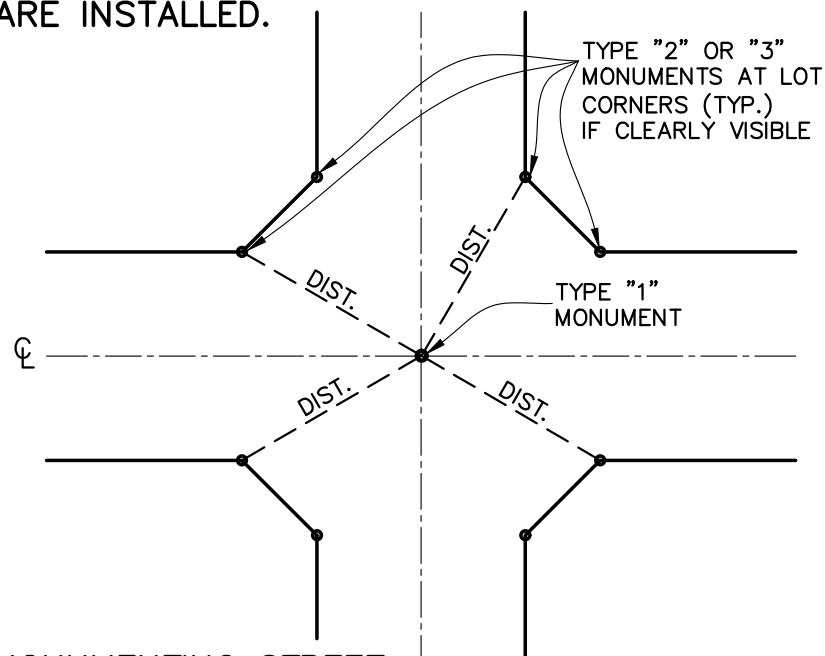


NOTE THAT CORNER RECORDS MUST BE FILED FOR ALL TAGGED POINTS NOT SHOWN ON ANOTHER RECORDED MAP.

NOTE THAT TIE POINTS SHOULD BE SET WHERE THEY WILL NOT BE DISTURBED BY FUTURE HANDICAP ACCESS RAMPS.

TYPE "2" OR "3" MONUMENTS. PER RECORD MAP MAY BE USED IF CLEARLY VISIBLE

MONUMENTING STREET INTERSECTIONS WHERE CURB AND GUTTERS ARE INSTALLED.



MONUMENTING STREET CENTERLINES WHERE CURBS ARE NOT PRESENT.

NOTES:

1. L&T AS SHOWN HEREON INDICATES LEAD & TAG (OR STEEL PIN & TAG) MONUMENTS SET IN CURB. (TYPE "4")
2. LEAD & TAG (OR STEEL PIN & TAG) MONUMENT WITNESS TO PROPERTY CORNER MAY BE SET IN LIEU OF SETTING FRONT LOT CORNERS.
3. SEE STD 511 AND STD 512 FOR MONUMENT DESCRIPTIONS, LOCATIONS, AND DETAILS.
4. UPON COMPLETION OF THE TRACT MONUMENTATION, THE ENGINEER OR LICENSED SURVEYOR SHALL FURNISH TO THE CITY ENGINEER TIES TO ALL STREET CENTERLINE MONUMENTS. SUCH TIES ARE TO BE TO MONUMENTS SET IN PERMANENT PHYSICAL OBJECTS, WITH AT LEAST 4 TIE POINTS NOTED. THE TIES ARE TO BE FURNISHED ON 8 1/2" x 11" SURVEY PAPER. SKETCHES SHALL BE CLEAR AND LEGIBLE, AND STAMPED AND SIGNED BY THE SURVEYOR OR ENGINEER. COPIES OF FILED CORNER RECORDS SHALL BE PROVIDED FOR ALL TAGGED POINTS NOT OTHERWISE SHOWN ON A RECORD MAP.
5. PRIOR TO CONSTRUCTION NEAR EXISTING MONUMENTS, A SURVEYOR OR ENGINEER (#<33966) MUST "TIE-OUT" THE EXISTING MONUMENT AND FILE A CORNER RECORD FOR ANY NEW TAGS SET. ANOTHER CORNER RECORD IS REQUIRED FOR ANY REPLACEMENT MONUMENT SET AFTER THE CONSTRUCTION ENDS. (P.L.S. ACT SECTION 8771(b))
6. ALL CITY OF INDIO REQUIREMENTS FOR MONUMENTS SHALL BE MET.

SEE STANDARD 512 FOR MONUMENT DETAILS AND STANDARDS

L:\Public Works - Engineering Standards\INDIO-510 (Sheet 1 of 2) 5/19/2016 12:40 PM



Juan Raya 05/18/16
 JUAN RAYA, P.E. DATE
 CITY ENGINEER
 RCE 68510

| REV. | DRAWN BY: | APP'D: | DATE: |
|------|-----------|--------|-------|
| | | | |
| | | | |
| | | | |

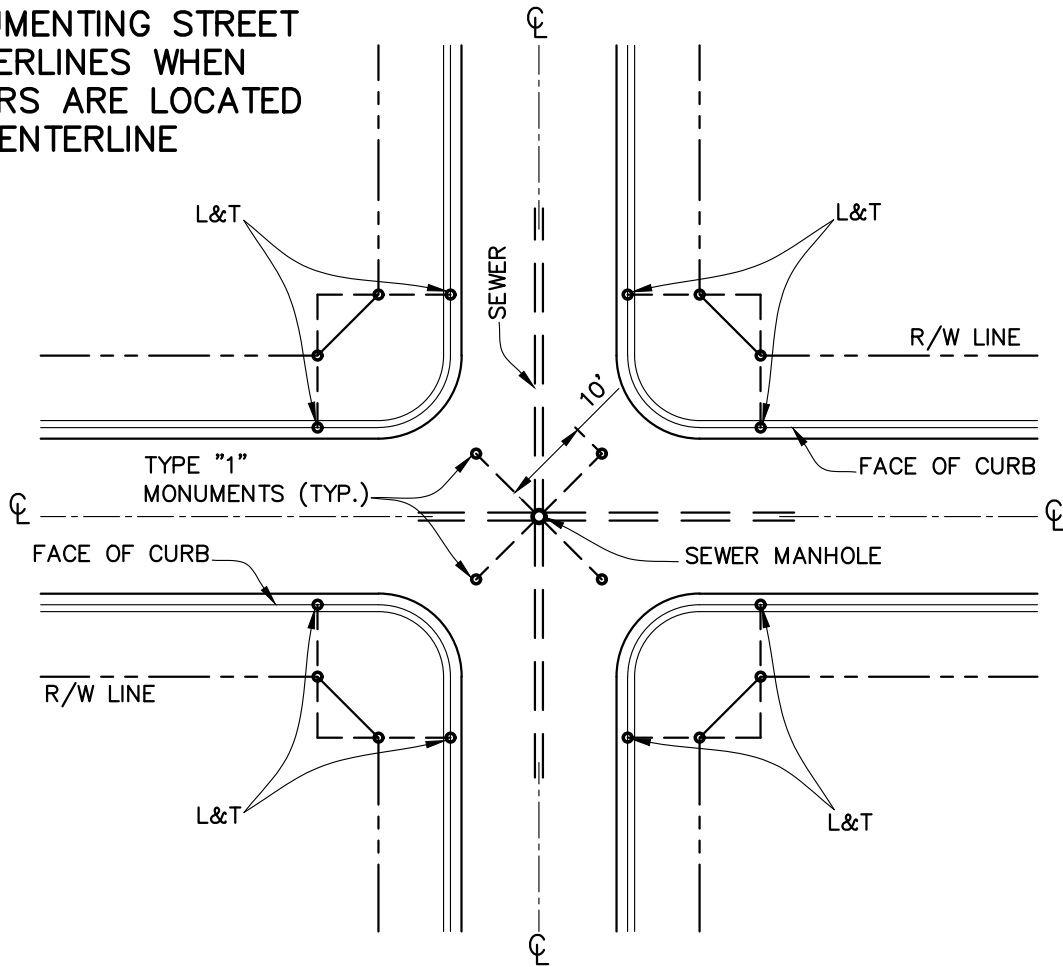


TIE-OUT STANDARDS

MAY 2016

STANDARD PLAN No.: **510**
 SHEET 1 OF 2

MONUMENTING STREET CENTERLINES WHEN SEWERS ARE LOCATED ON CENTERLINE



NOTES:

1. L&T AS SHOWN HEREON INDICATES LEAD & TAG (OR STEEL PIN & TAG) MONUMENTS SET IN CURB. (TYPE "4")
2. LEAD & TAG (OR STEEL PIN & TAG) MONUMENT WITNESS TO PROPERTY CORNER MAY BE SET IN LIEU OF SETTING FRONT LOT CORNERS.
3. SEE STD 511 AND STD 512 FOR MONUMENT DESCRIPTIONS, LOCATIONS, AND DETAILS.
4. UPON COMPLETION OF THE TRACT MONUMENTATION, THE ENGINEER OR LICENSED SURVEYOR SHALL FURNISH TO THE CITY ENGINEER TIES TO ALL STREET CENTERLINE MONUMENTS. SUCH TIES ARE TO BE TO MONUMENTS SET IN PERMANENT PHYSICAL OBJECTS, WITH AT LEAST 4 TIE POINTS NOTED. THE TIES ARE TO BE FURNISHED ON 8 1/2" x 11" SURVEY PAPER. SKETCHES SHALL BE CLEAR AND LEGIBLE, AND STAMPED AND SIGNED BY THE SURVEYOR OR ENGINEER. COPIES OF FILED CORNER RECORDS SHALL BE PROVIDED FOR ALL TAGGED POINTS NOT OTHERWISE SHOWN ON A RECORD MAP.
5. PRIOR TO CONSTRUCTION NEAR EXISTING MONUMENTS, A SURVEYOR OR ENGINEER (#<33966) MUST "TIE-OUT" THE EXISTING MONUMENT AND FILE A CORNER RECORD FOR ANY NEW TAGS SET. ANOTHER CORNER RECORD IS REQUIRED FOR ANY REPLACEMENT MONUMENT SET AFTER THE CONSTRUCTION ENDS. (P.L.S. ACT SECTION 8771(b))
6. ALL CITY OF INDIO REQUIREMENTS FOR MONUMENTS SHALL BE MET.

L:\Public Works - Engineering Standards\INDIO-510 (Sheet 2 of 2) 5/19/2016 12:39 PM



Juan Raya 05/18/16
 JUAN RAYA, P.E. DATE
 CITY ENGINEER
 RCE 68510

| REV. | DRAWN BY: | APP'D: | DATE: |
|------|-----------|--------|-------|
| | | | |
| | | | |
| | | | |



TIE-OUT STANDARDS

STANDARD PLAN No.: **510**
 SHEET 2 OF 2

MAY 2016