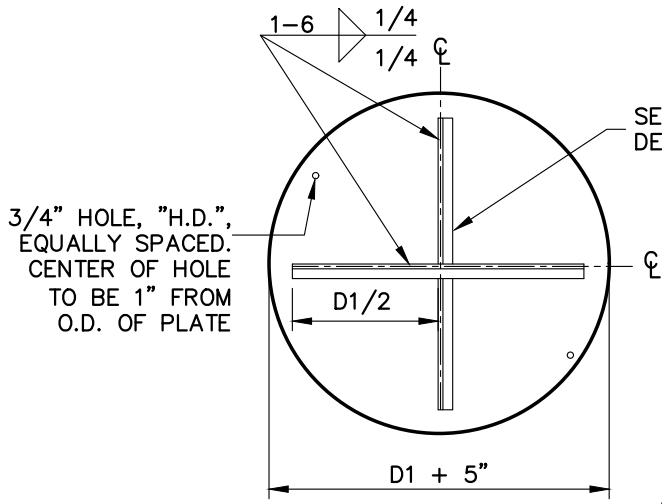
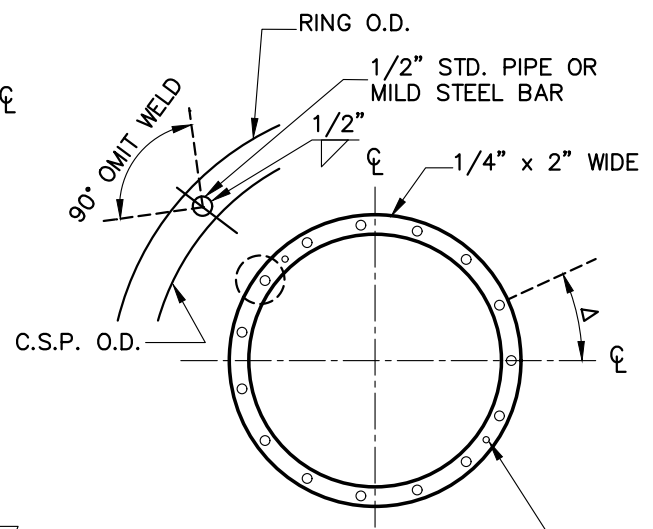


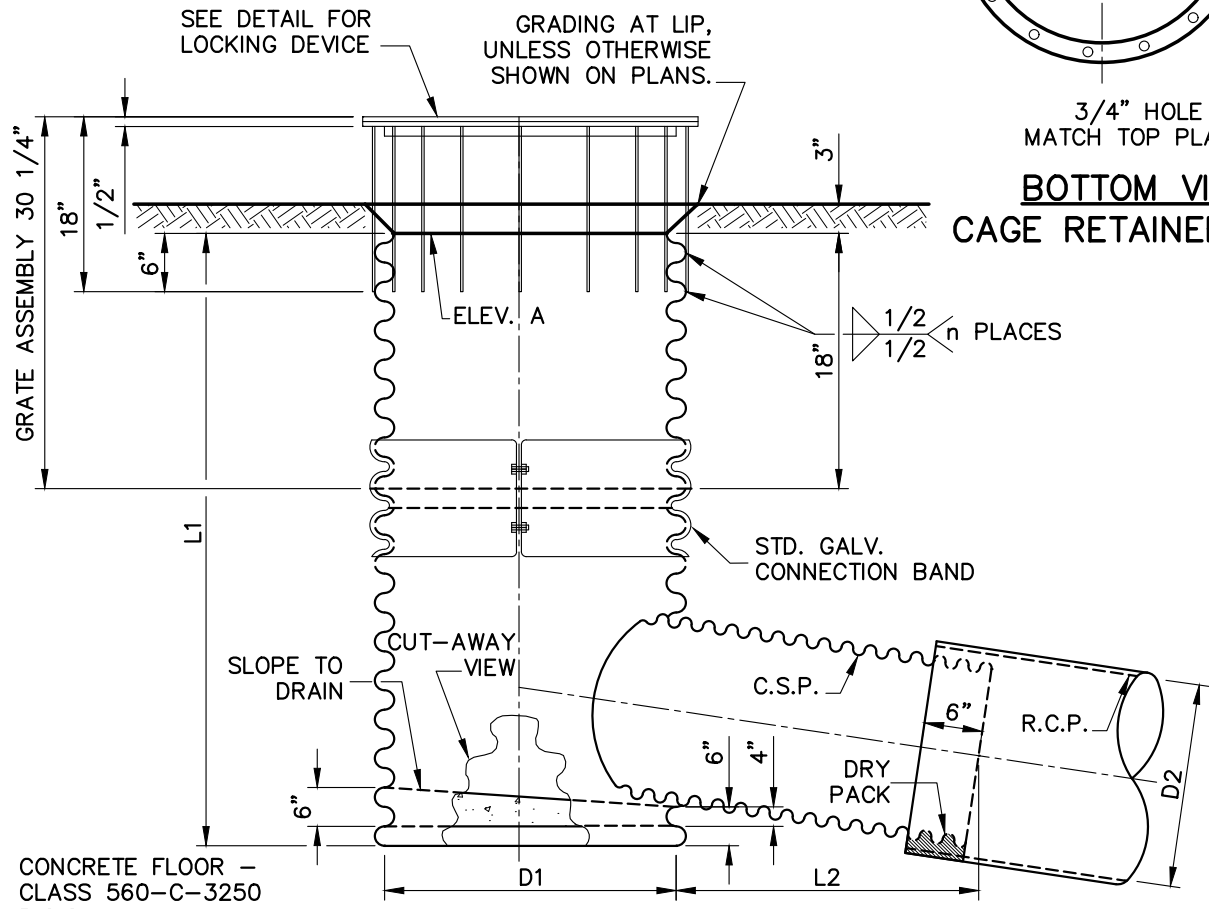
L:\Public Works - Engineering Standards\INDIO-306 (Sheet 1 of 2) 5/19/2016 11:58 AM



**BOTTOM VIEW
TOP PLATE**



**BOTTOM VIEW
CAGE RETAINER RING**



ELEVATION

NOTES:

1. THIS SHALL GENERALLY NOT BE USED AS AN ULTIMATE IMPROVEMENT.
2. THE CITY ENGINEER MUST APPROVE THE USE OF THIS DETAIL FOR EACH SPECIFIC SITUATION.



Juan Raya 05/18/16
 JUAN RAYA, P.E.
 CITY ENGINEER
 R.C.E. 68510

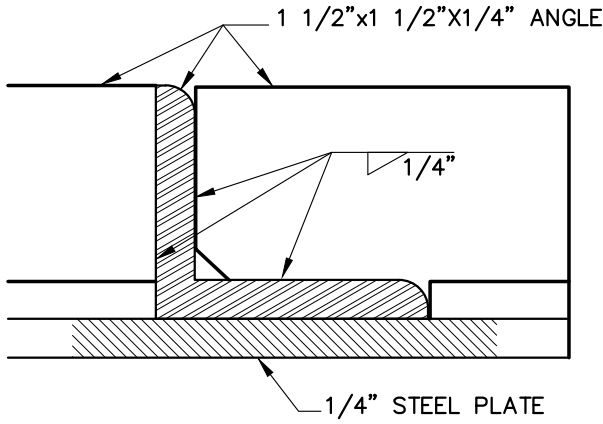
REV.	DRAWN BY:	APP'D:	DATE:



CMP RISER INLET

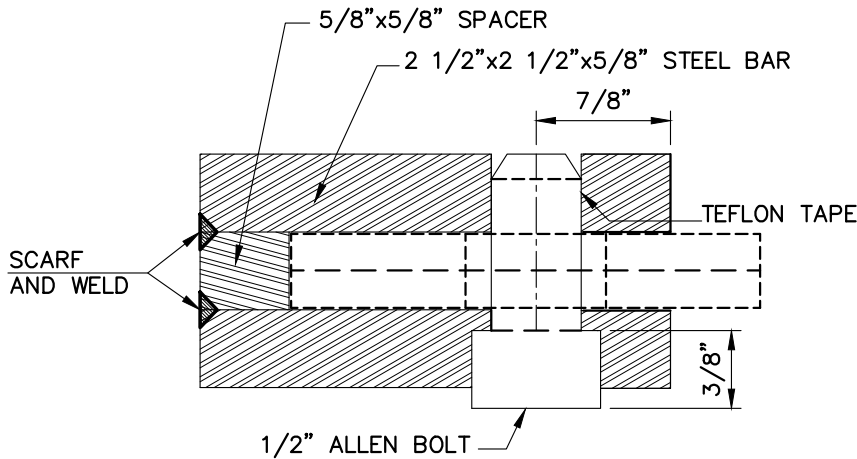
STANDARD PLAN No.: **306**
 SHEET 1 OF 2

MAY 2016



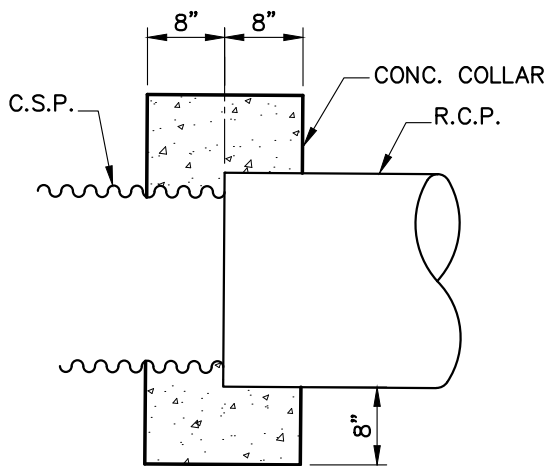
DETAIL-PLATE STIFFENER

D1	Δ	n	"HD"
18"	40°	9	2
24"-27"	30°	12	
30"-33"	24°	15	3
36"-39"	20°	18	
42"-45"	16.5°	22	4
48"-51"	14.5°	25	
54"-57"	13°	28	
60"-63"	11.5°	31	
66"	10.5°	34	



HOLD-DOWN (H.D.)

D1 RISER DIAMETER	C.S.P. GAUGE
18"-27"	16
30"-39"	14
42"-48"	12
51"-66"	10



ALTERNATE JUNCTION

NOTES:

1. RISER PIPE SHALL EXTEND TO "ELEV. A".
2. ELEVATION A, D1, D2 L1, L2 ARE SHOWN ON PLANS.
3. CORRUGATED STEEL PIPE SHALL CONFORM TO AASHTO M-36.
4. GRATE ASSEMBLY SHALL BE GALVANIZED AFTER FABRICATION.
5. FOR D1=54" AND LARGER, WELD 1 1/2"x1 1/2"x1/4" ANGLES TO PLATE WITH 1" WELDS AT 6" O.C.
6. n=NUMBER OF BARS ON GRATE ASSEMBLY.
7. GAUGE OF PIPE FOR DIAMETER D2 SHALL BE SAME AS FOR RISER.
8. RISER AND STUB SHALL BE SHOP FABRICATED AND GALVANIZED AFTER WELDING.

L:\Public Works - Engineering Standards\INDIO-306 (Sheet 2 of 2) 5/19/2016 11:58 AM



Juan Raya 05/18/16
 JUAN RAYA, P.E. DATE
 CITY ENGINEER
 RCE 68510

REV.	DRAWN BY:	APP'D:	DATE:



CMP RISER INLET

STANDARD PLAN No.: **306**
 SHEET 2 OF 2

MAY 2016