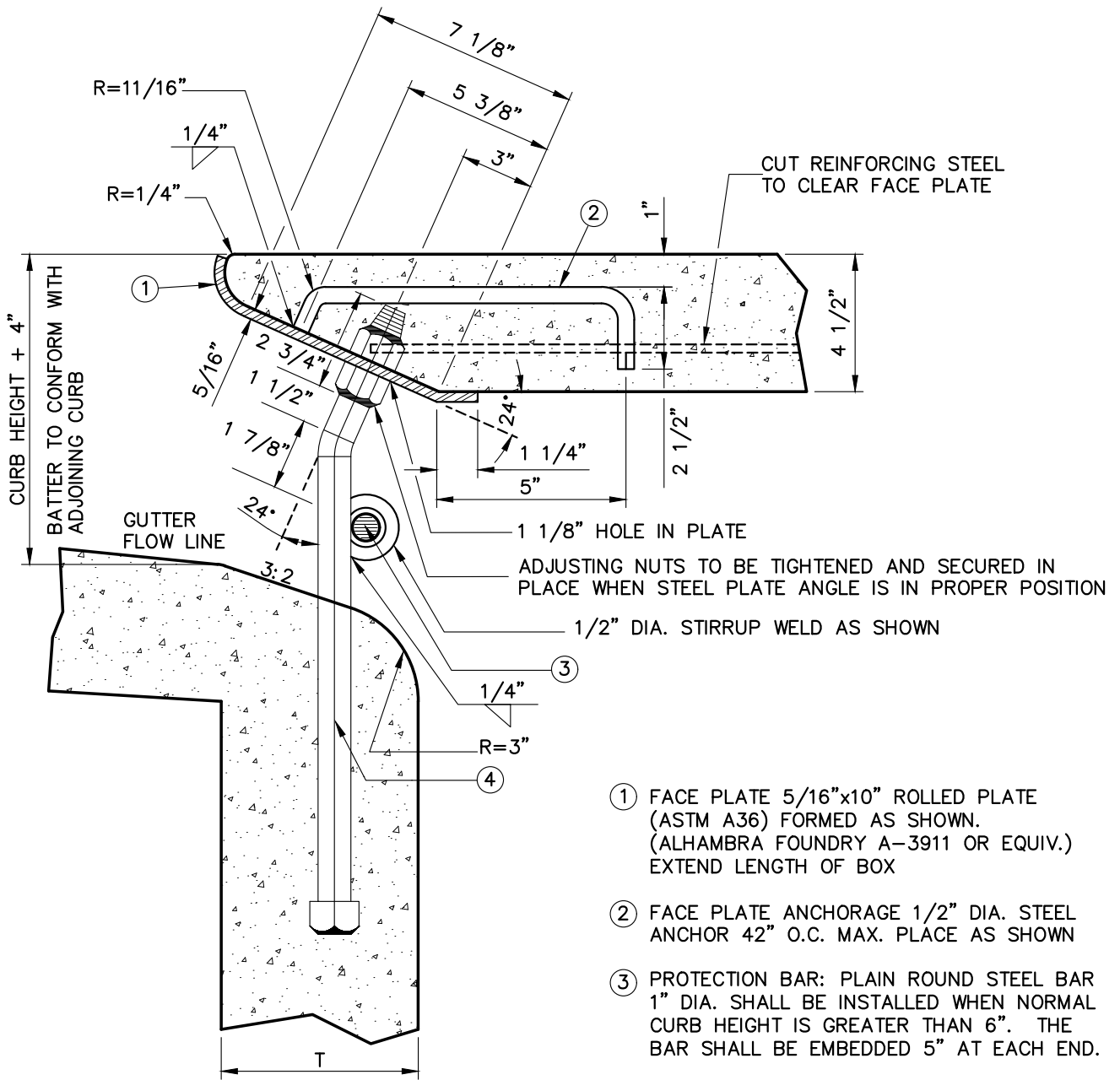


SEE STDS 300 & 302



SECTION THROUGH CURB FACE

- ① FACE PLATE 5/16"x10" ROLLED PLATE (ASTM A36) FORMED AS SHOWN. (ALHAMBRA FOUNDRY A-3911 OR EQUIV.) EXTEND LENGTH OF BOX
- ② FACE PLATE ANCHORAGE 1/2" DIA. STEEL ANCHOR 42" O.C. MAX. PLACE AS SHOWN
- ③ PROTECTION BAR: PLAIN ROUND STEEL BAR 1" DIA. SHALL BE INSTALLED WHEN NORMAL CURB HEIGHT IS GREATER THAN 6". THE BAR SHALL BE EMBEDDED 5" AT EACH END.
- ④ SUPPORT BAR 2" DIA. x 20" LONG W/ SQ. HEAD AND HEX NUT, BEND AS SHOWN. SPACING SHALL NOT EXCEED 4 FEET.
- ⑤ ALL EXPOSED METAL PARTS SHALL BE GALVANIZED.

L:\Public Works - Engineering Standards\INDIO-305 5/19/2016 11:59 AM



Juan Raya 05/18/16
 JUAN RAYA, P.E. DATE
 CITY ENGINEER
 RCE 68510

REV.	DRAWN BY:	APP'D:	DATE:



**CURB SUPPORT
 DETAIL**

STANDARD PLAN No.: **305**

MAY 2016