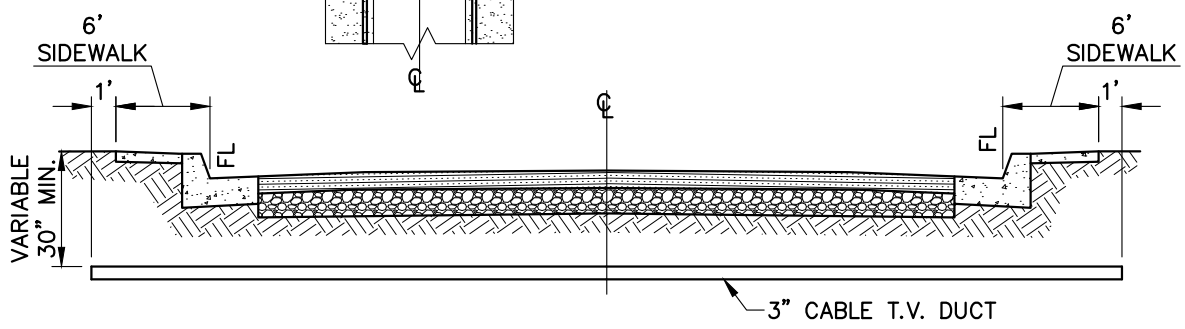
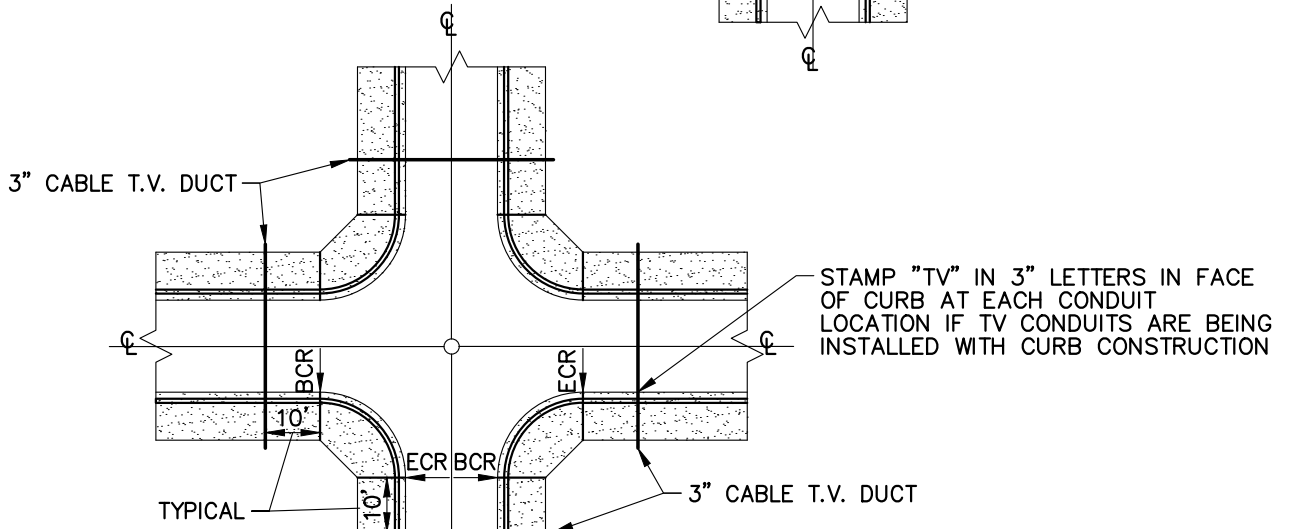
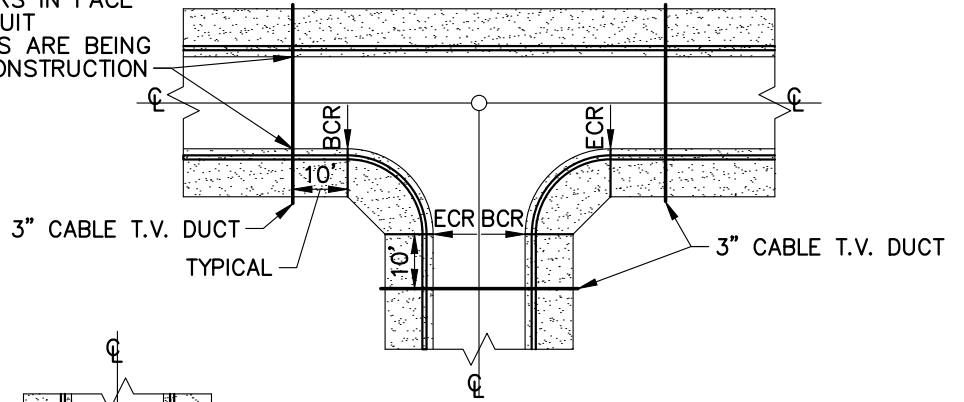


STAMP "TV" IN 3" LETTERS IN FACE OF CURB AT EACH CONDUIT LOCATION IF TV CONDUITS ARE BEING INSTALLED WITH CURB CONSTRUCTION



TYPICAL CROSS SECTION
NOT TO SCALE

NOTES:

- 3" CABLE T.V. DUCTS SHALL BE SCHEDULE 80 P.V.C., RIGID GALVANIZED STEEL CONDUITS, OR APPROVED EQUAL.

L:\Public Works - Engineering Standards\INDIO-148 5/19/2016 11:05 AM



Juan Raya 05/18/16
 JUAN RAYA, P.E. DATE
 CITY ENGINEER
 RCE 68510

REV.	DRAWN BY:	APP'D:	DATE:



LOCATION OF CABLE TV DUCTS AT STREET INTERSECTIONS

STANDARD PLAN No.: **148**

MAY 2016