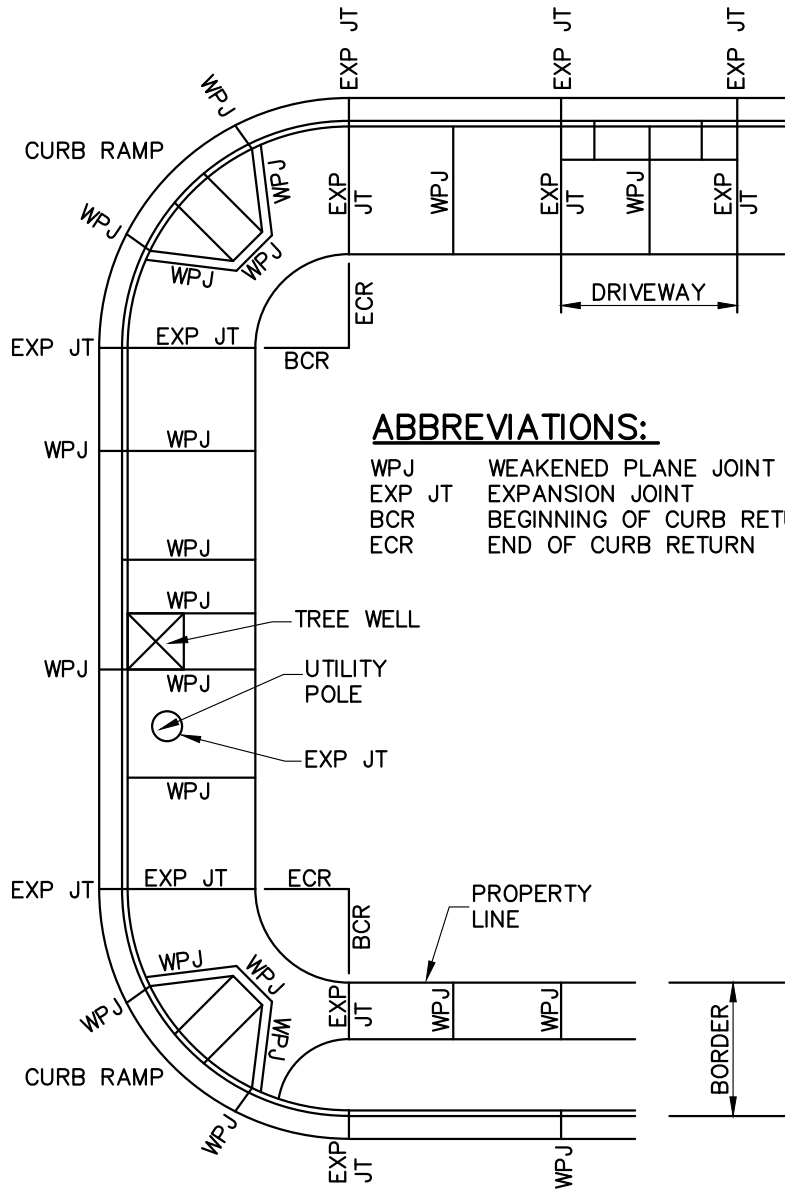
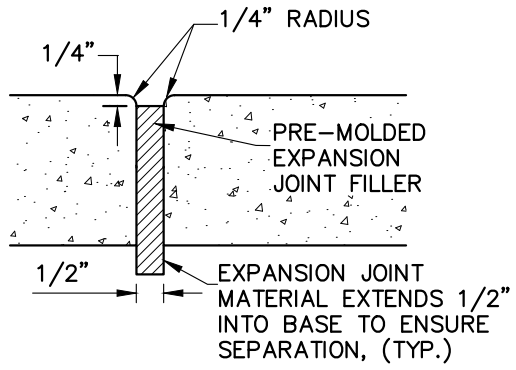


L:\Public Works - Engineering Standards\INDIO-126 5/19/2016 11:40 AM

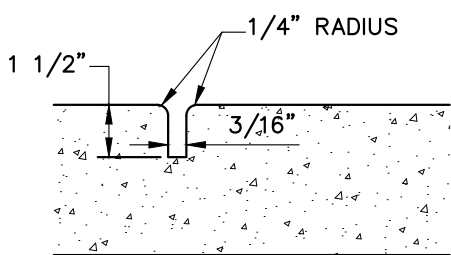


ABBREVIATIONS:

- WPJ WEAKENED PLANE JOINT
- EXP JT EXPANSION JOINT
- BCR BEGINNING OF CURB RETURN
- ECR END OF CURB RETURN



EXPANSION JOINT



WEAKENED PLANE JOINT

NOTES:

1. WEAKENED PLANE JOINTS SHALL BE USED FOR ALL JOINTS, EXCEPT WHERE EXPANSION JOINTS ARE REQUIRED.
2. WEAKENED PLANE JOINTS SHALL BE CONSTRUCTED AT REGULAR INTERVALS NOT EXCEEDING 5' IN WALKS AND 10' IN CURB AND GUTTER, DRIVEWAYS AND CROSS GUTTERS. JOINTS IN CURB AND WALK SHALL BE ALIGNED.
3. EXPANSION JOINTS ARE REQUIRED AT:
 - A. BCR AND ECR IN CURB, GUTTER AND SIDEWALK.
 - B. AT EACH SIDE OF DRIVEWAY FOR CURB, GUTTER AND SIDEWALK.
 - C. AROUND UTILITY POLES, ETC, LOCATED IN CONCRETE AREAS.
 - D. AT INTERVALS NOT EXCEEDING 200' IN CURB, GUTTER AND SIDEWALKS.
 - E. AT EACH SIDE OF CATCH BASINS.
4. CURB AND GUTTER SHALL BE CONSTRUCTED SEPARATELY FROM SIDEWALK.



Juan Raya 05/18/16
 JUAN RAYA, P.E.
 CITY ENGINEER
 RCE 68510

REV.	DRAWN BY:	APP'D:	DATE:



**JOINTING FOR
 CONCRETE
 IMPROVEMENTS
 IN R / W**

STANDARD PLAN No.:

126

MAY 2016