

8 steps to Safely Re-Open Your Business

Reductions in normal water use or complete building shutdowns can create microbial hazards such as mold and Legionella (the cause of Legionnaires' disease), and should be considered prior to reopening. These 8 steps are specific to Legionella. Please visit [CDC.gov](https://www.cdc.gov) for more details.

1

DEVELOP A WATER MANAGEMENT PLAN

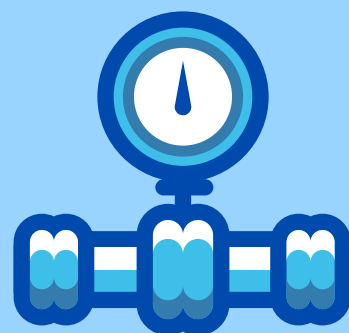
Develop a checklist of areas that need to be flushed and ensure you have proper supplies (N95 face mask, half-face air-purifying equipment, etc.). Guidance to help with this process is available from CDC and other resources available at www.indiowater.org/COVID19



2

CHECK YOUR WATER HEATER

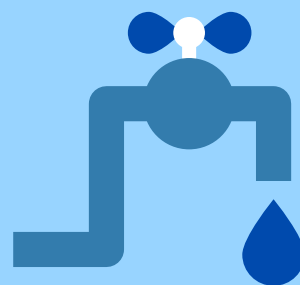
Review your manufacturers recommendations; do they recommend draining your water heater after a prolonged period of disuse? Make sure your water heater is set to the proper temperature.



3

FLUSH YOUR WATER SYSTEM

Replace all water inside building piping with fresh water by flushing hot and cold water through all points of use (e.g., showers, sink faucets). Flush until hot water reaches its maximum temperature. Other water-using devices may require additional cleaning steps.



4

CLEAN ALL WATER FEATURES

Be sure to follow any recommended manufacturer guidelines for cleaning. Ensure that decorative water features are free of visible slime or biofilm. After the water feature has been re-filled, measure disinfectant levels to ensure that the water is safe for use.



5

ENSURE HOT TUBS/SPAS ARE SAFE

If maintenance was discontinued for a period of time, ensure that hot tubs/spas are free of visible slime or biofilm before filling with water. Perform a hot tub/spa disinfection procedure before use, see CDC Hot Tub Disinfection Guidance (follow Steps 4-9 and 12-13).



6

CHECK COOLING TOWERS

Ensure that cooling towers are maintained (including start-up and shut-down procedures) per manufacturer's guidelines and industry best practices. Ensure that the tower and basin are free of visible slime, debris, and biofilm before use.



7

CLEAN ALL SAFETY EQUIPMENT

Ensure safety equipment including fire sprinkler systems, eye wash stations, and safety showers are clean and well-maintained. Regularly flush, clean, and disinfect these systems according to manufacturers' specifications.



8

MAINTAIN YOUR WATER SYSTEM

After your water system has returned to normal, ensure that the risk of Legionella growth is minimized by regularly checking water quality parameters.

