

ASSESSMENT DIAGRAM

ASSESSMENT DISTRICT NO. 99-1

THE CITY OF INDIO, COUNTY OF RIVERSIDE, STATE OF CALIFORNIA

RECORDED THIS _____ DAY OF _____, 1999 AT THE HOUR OF _____ O'CLOCK _____ M. IN BOOK _____ PAGE _____ OF MAPS OF ASSESSMENT AND COMMUNITY FACILITIES DISTRICTS, IN THE OFFICE OF THE COUNTY RECORDER, IN THE COUNTY OF RIVERSIDE, STATE OF CALIFORNIA.

FEE: _____ NO.: _____

GARY L. ORSO
RIVERSIDE COUNTY ASSESSOR-CLERK-RECORDER

BY: _____
DEPUTY

FILED IN THE OFFICE OF THE CITY CLERK OF THE CITY OF INDIO THIS _____ DAY OF _____ 1999.

BY: _____
CITY CLERK OF THE CITY OF INDIO

AN ASSESSMENT WAS LEVIED BY THE CITY COUNCIL OF THE CITY OF INDIO OF RIVERSIDE COUNTY ON THE LOTS, PIECES, AND PARCELS SHOWN ON THIS ASSESSMENT DIAGRAM, ON THE _____ DAY OF _____, 1999 SAID ASSESSMENT DIAGRAM AND ASSESSMENT ROLL WERE RECORDED IN THE OFFICE OF THE SUPERINTENDENT OF STREETS OF THE CITY OF INDIO OF RIVERSIDE COUNTY ON THE _____ DAY OF _____, 1999. REFERENCE IS MADE TO THE ASSESSMENT ROLL RECORDED IN THE OFFICE OF SAID SUPERINTENDENT OF STREETS AND COUNTY SURVEYOR FOR THE EXACT AMOUNT OF EACH ASSESSMENT LEVIED AGAINST EACH PARCEL OF LAND SHOWN ON THE ASSESSMENT DIAGRAM.

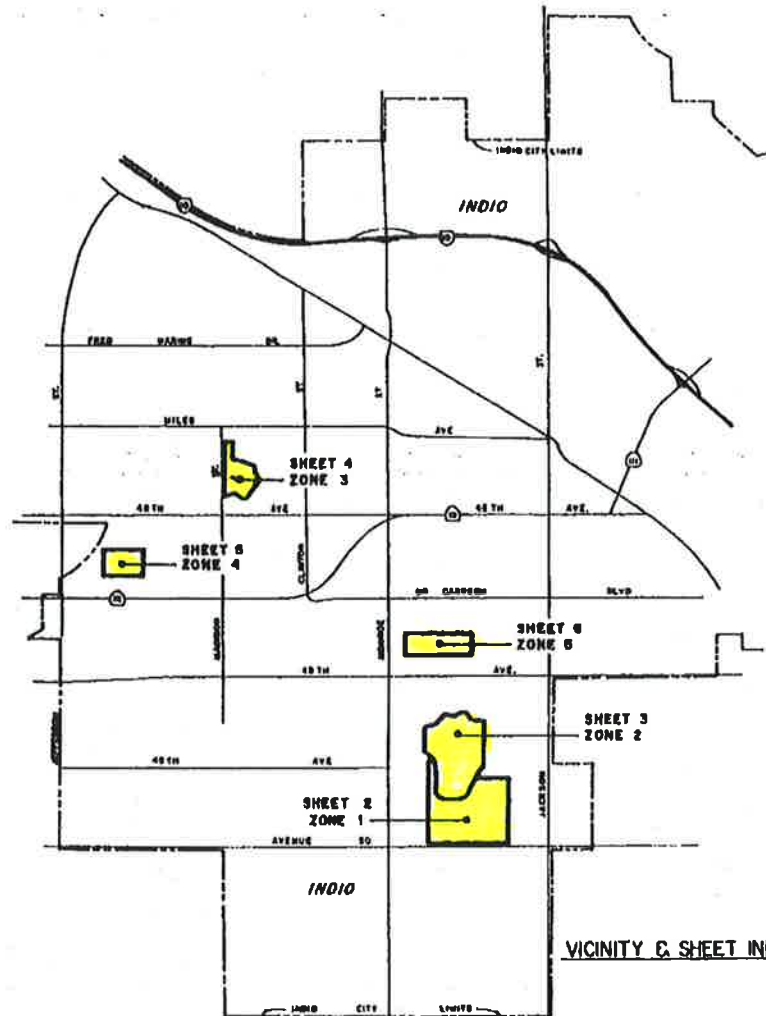
CITY CLERK OF THE CITY OF INDIO, OF THE COUNTY OF RIVERSIDE, STATE OF CALIFORNIA.

BY: _____
DEPUTY

LEGEND

———— DISTRICT BOUNDARY

- - - - - INDIO CITY LIMITS



VICINITY & SHEET INDEX MAP

28



ASSESSMENT DIAGRAM

SHEET 2 OF 6 SHEETS




ASSESSMENT DISTRICT NO. 99-1

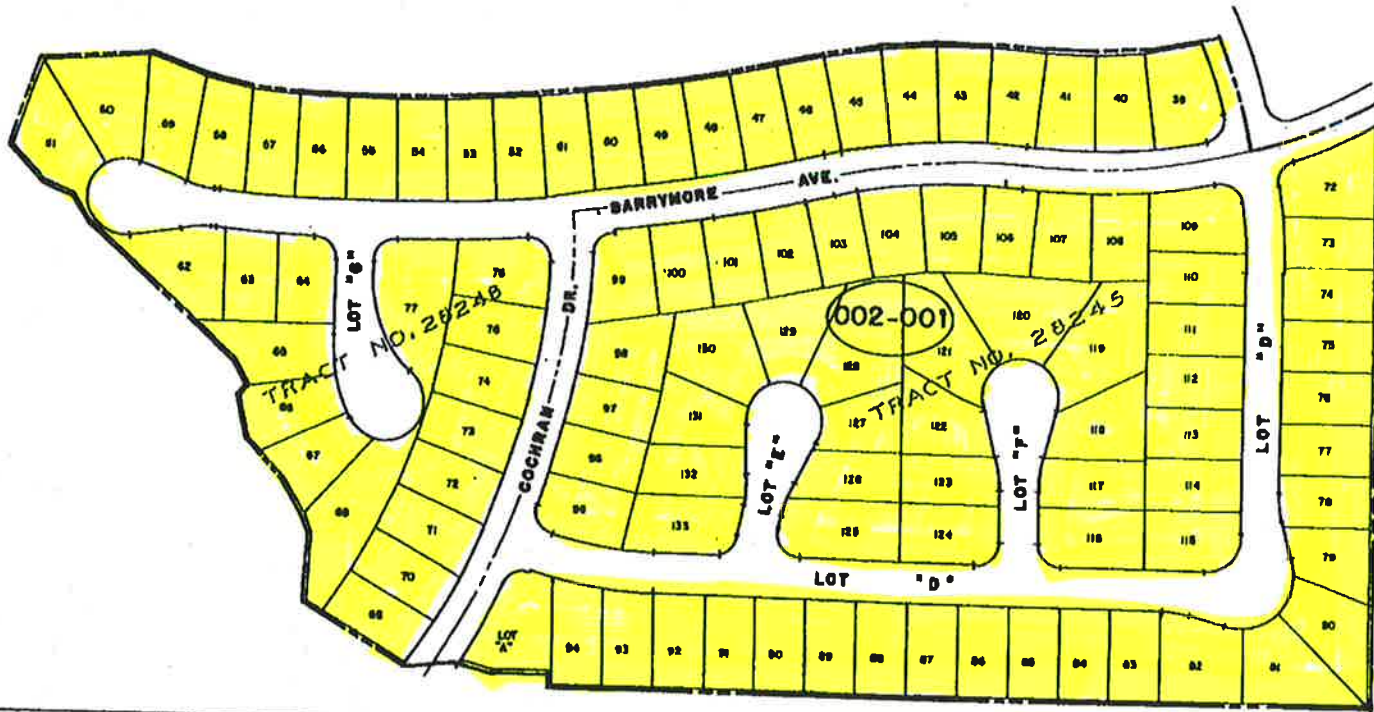
THE CITY OF INDIO, COUNTY OF RIVERSIDE, STATE OF CALIFORNIA

ZONE 1

PORTION OF TRACT NO. 28245, M.B. 280/53 THRU 59
PORTION OF TRACT NO. 28248, M.B. 280/60 THRU 65
ALL IN ASSESSOR'S PARCEL NO. 614-320-014
(101 FUTURE LOTS)

LEGEND

-  DISTRICT BOUNDARY
-  ASSESSMENT NUMBER
002-001
-  LOT NUMBER



29



ASSESSMENT DIAGRAM

ASSESSMENT DISTRICT NO. 99-1

THE CITY OF INDIO, COUNTY OF RIVERSIDE, STATE OF CALIFORNIA

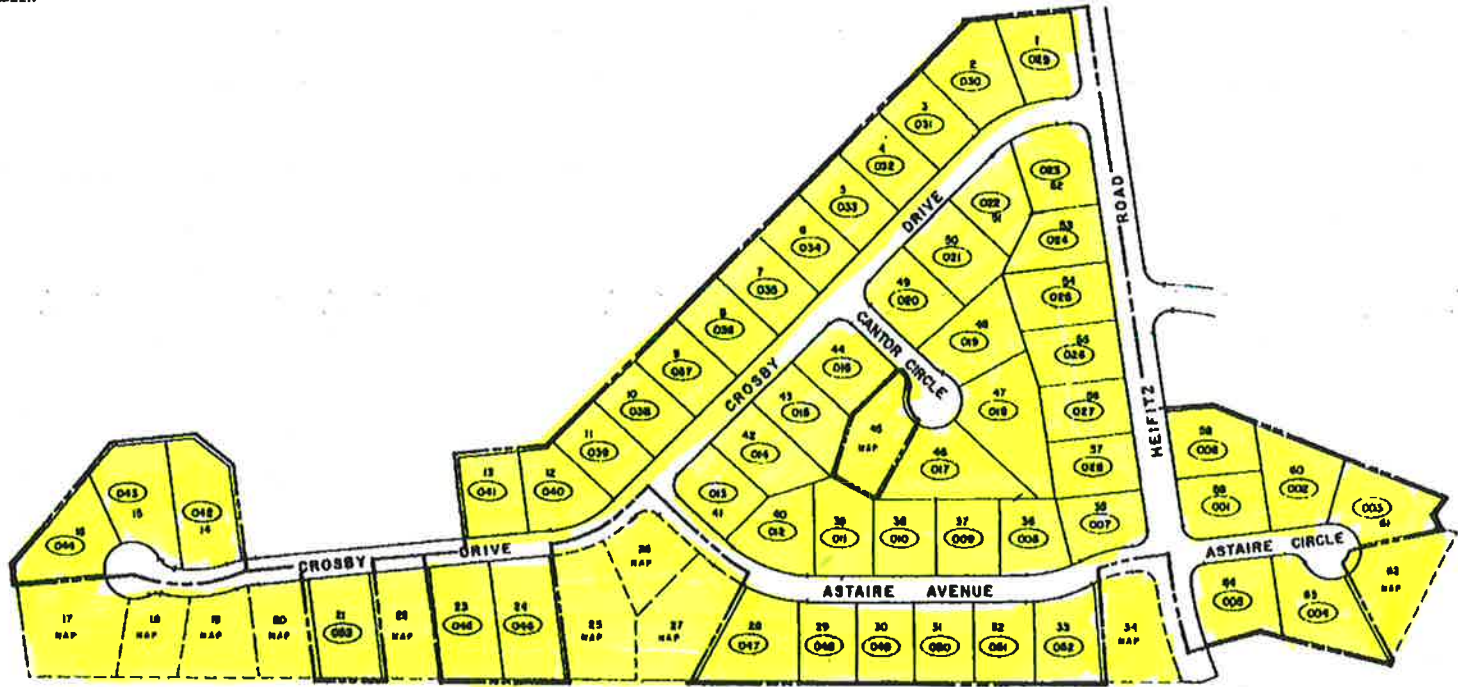
SHEET 3 OF 6 SHEETS

LEGEND

- DISTRICT BOUNDARY
- XX ASSESSMENT NUMBER 003-XXX
- NAP NOT A PART
- 64 LOT NUMBER

ZONE 2

PORTION OF TRACT NO. 21815, M.B. 201/27-29 & 208/41-43
(53 LOTS)



30



ASSESSMENT NO'S. 003-001 THRU 003-053

ASSESSMENT DIAGRAM

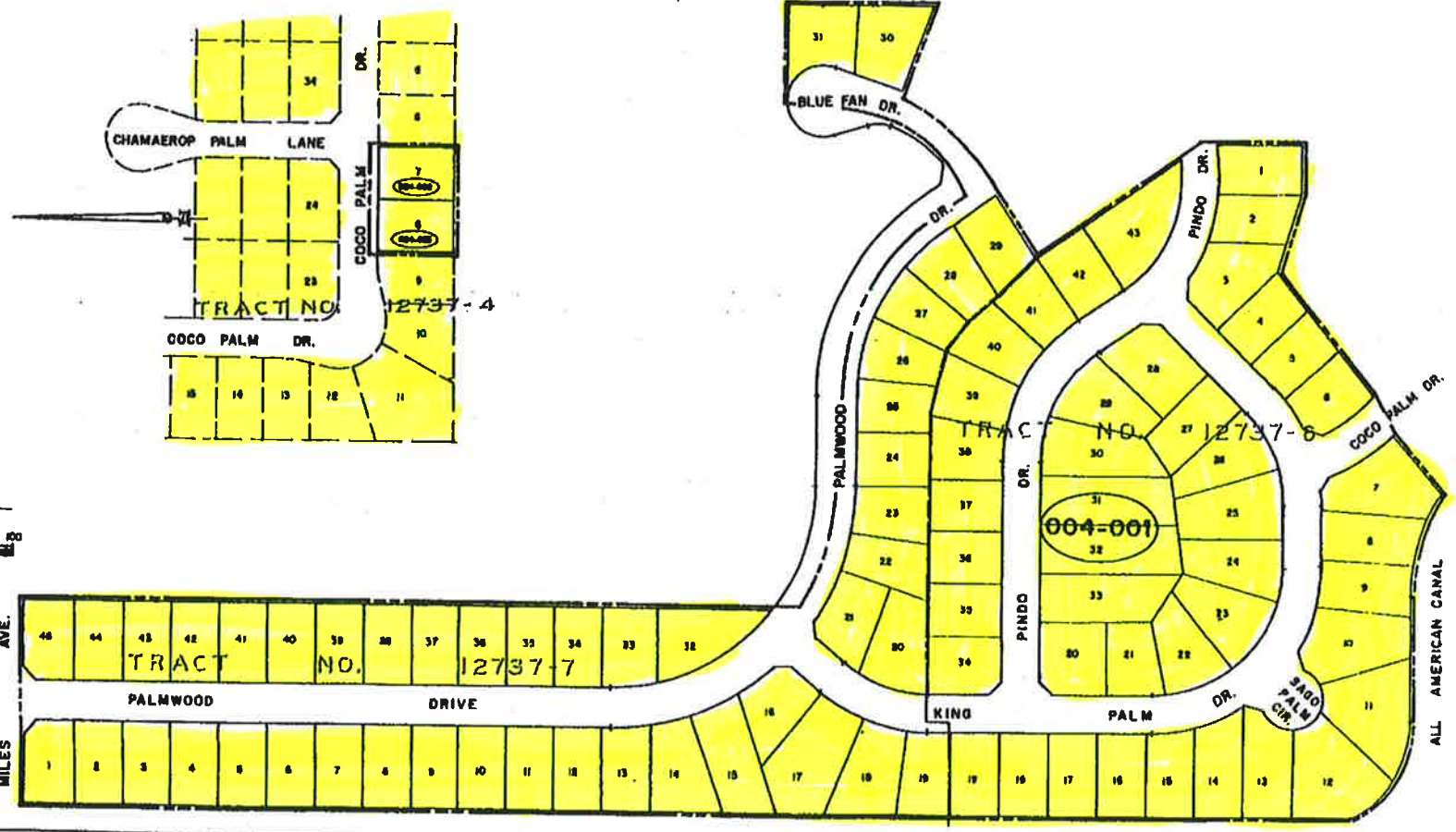
SHEET 4 OF 6 SULLY

ASSESSMENT DISTRICT NO. 99-1
THE CITY OF INDIO, COUNTY OF RIVERSIDE, STATE OF CALIFORNIA

LEGEND

- DISTRICT BOUNDARY
- ASSESSMENT NUMBER 004-001
- LOT NUMBER

ZONE 3
PROPOSED TRACT NO'S 12737-4 M.B. 246/20-30, 12737-6 & 12737-7
ASSESSOR'S PARCEL NO. 808-130-015
(FUTURE 90 LOTS)



AVE.
MILES



31

ASSESSMENT DIAGRAM

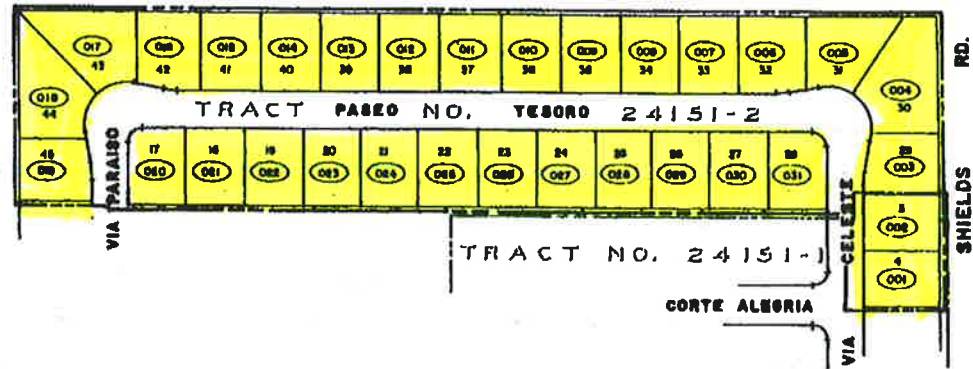
ASSESSMENT DISTRICT NO. 99-1
THE CITY OF INDIO, COUNTY OF RIVERSIDE, STATE OF CALIFORNIA

LEGEND

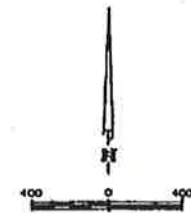
- DISTRICT BOUNDARY
- (XX) ASSESSMENT NUMBER 005-XXX
- 00 LOT NUMBER

ZONE 4

TRACT NO. 24151-1, M.B. 227/32-33
 TRACT NO. 24151-2, M.B. 227/34-35
 (3) LOTS



32



ASSESSMENT DIAGRAM

ASSESSMENT DISTRICT NO. 99-1
THE CITY OF INDIO, COUNTY OF RIVERSIDE, STATE OF CALIFORNIA

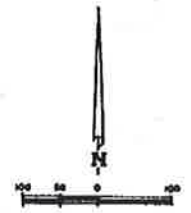
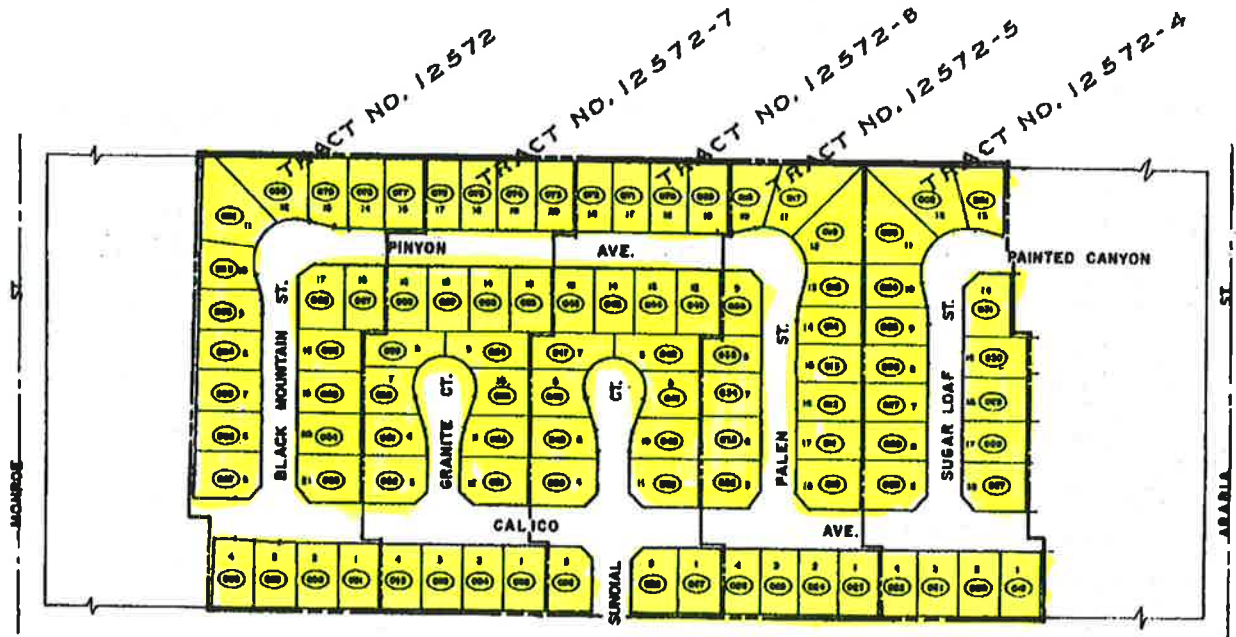
ZONE 5

- TRACT NO. 12572 M.B. 168/54-56
- TRACT NO. 12572-4 M.B. 168/42-44
- TRACT NO. 12572-5 M.B. 168/45-47
- TRACT NO. 12572-6 M.B. 168/48-50
- TRACT NO. 12572-7 M.B. 168/51-53

(96 LOTS)

LEGEND

- DISTRICT BOUNDARY
- ASSESSMENT NUMBER 006-XXX
- LOT NUMBER



33

