

COPY

ASSESSMENT DIAGRAM

ASSESSMENT DISTRICT NO. 2002-3

THE CITY OF INDIO, COUNTY OF RIVERSIDE, STATE OF CALIFORNIA

AN ASSESSMENT WAS LEVIED BY THE CITY COUNCIL OF THE CITY OF INDIO OF RIVERSIDE COUNTY ON THE LOTS, PIECES AND PARCELS SHOWN ON THIS ASSESSMENT DIAGRAM ON THE 17th DAY OF OCTOBER 2002 SAID ASSESSMENT DIAGRAM AND ASSESSMENT ROLL WERE RECORDED IN THE OFFICE OF THE SUPERINTENDENT OF STREETS AND COUNTY SURVEYOR FOR THE EXACT AMOUNT OF EACH ASSESSMENT LEVIED AGAINST EACH PARCEL OF LAND SHOWN ON THE ASSESSMENT DIAGRAM.

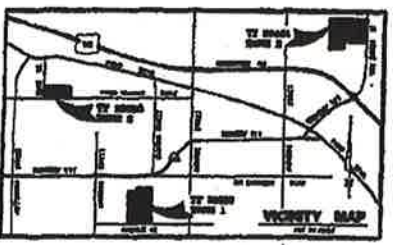
FILED IN THE OFFICE OF THE CITY CLERK OF THE CITY OF INDIO THIS 17th DAY OF OCTOBER 2002.
BY: Gladys Hernandez
CITY CLERK OF THE CITY OF INDIO

Tom Zeman
SUPERINTENDENT OF STREETS OF THE CITY OF INDIO,
OF THE COUNTY OF RIVERSIDE, STATE OF CALIFORNIA.

RECORDED THIS 17th DAY OF OCT 2002 AT THE HOUR OF 8:00 CLOCK P.M. IN BOOK 52 PAGES 50-52 OF MAPS OF ASSESSMENT AND COMMUNITY FACILITIES DISTRICTS, IN THE OFFICE OF THE COUNTY RECORDER, IN THE COUNTY OF RIVERSIDE, STATE OF RIVERSIDE.

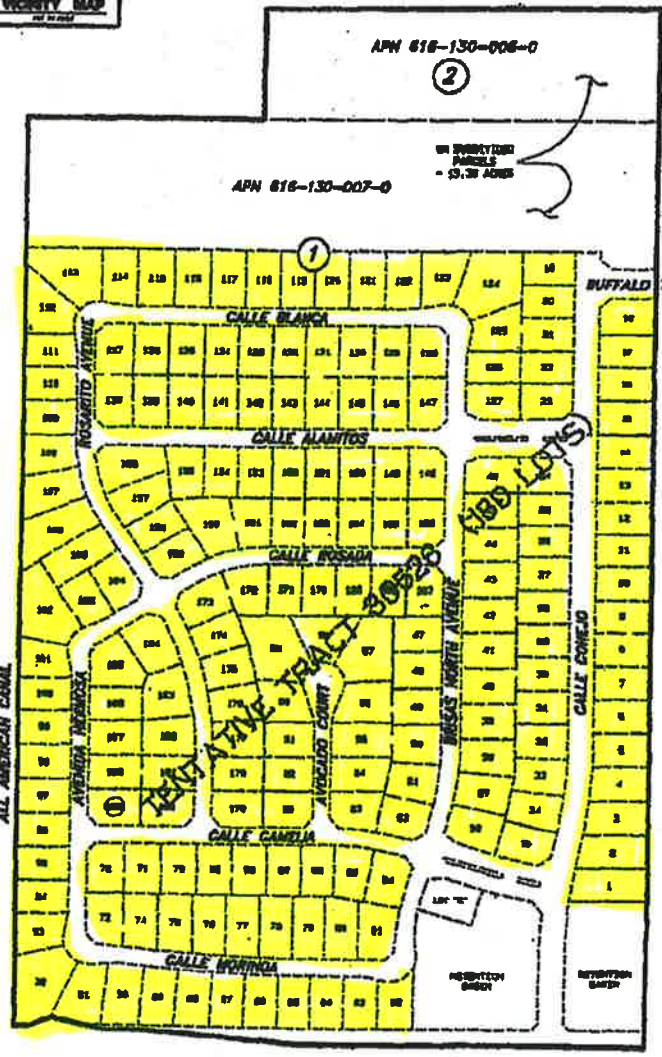
FEES: \$0 NO.: 2002-SRD 351

GARY L. DESSO, RIVERSIDE COUNTY ASSESSOR - CLERK - RECORDER
BY: Paul de la Torre
DEPUTY



- LEGEND**
- DISTRICT BOUNDARY
 - S LOT NUMBER
 - APH ASSESSOR'S PARCEL NUMBER

**ZONE 1
TENTATIVE
TRACT NO. 30528**



6610-20 '00 W.O. 02-1189



AVENUE 48

5/25
COPY

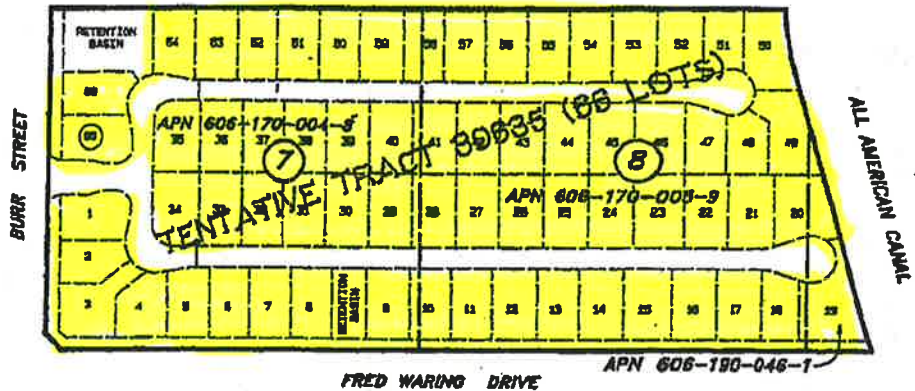
ASSESSMENT DIAGRAM

ASSESSMENT DISTRICT NO. 2002-3

THE CITY OF INDIO, COUNTY OF RIVERSIDE, STATE OF CALIFORNIA

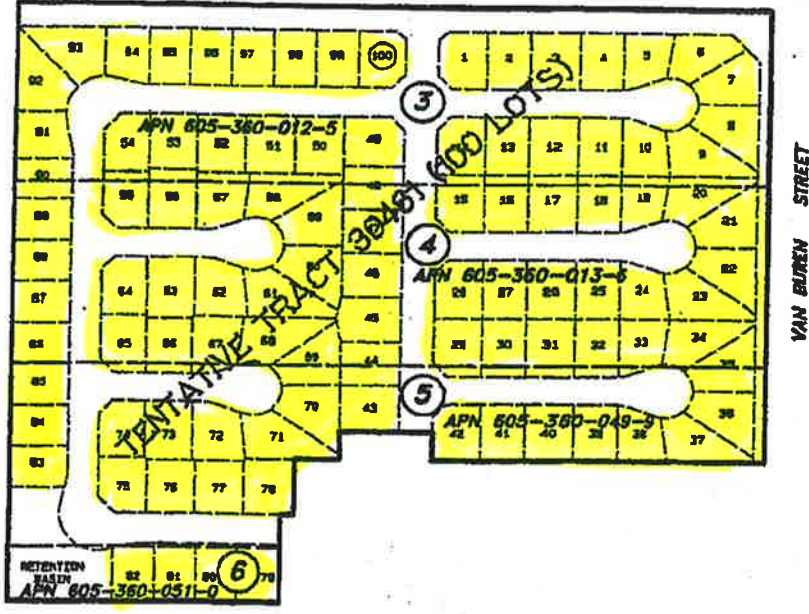
- LEGEND**
- DISTRICT BOUNDARY
 - 6. LOT NUMBER
 - APN ASSESSOR'S PARCEL NUMBER

ZONE 3 TENTATIVE TRACT NO. 30635



ZONE 2 TENTATIVE TRACT NO. 30461

AVENUE 43



6610-20 '07M

