

**ASSESSMENT DIAGRAM FOR  
ASSESSMENT DISTRICT NO. 2003-6  
( SHADOW HILLS - MASTER PLAN - PHASE 2 )  
CITY OF INDO, COUNTY OF RIVERSIDE, STATE OF CALIFORNIA**

RECORDED THIS \_\_\_\_\_ DAY OF \_\_\_\_\_, 2003 AT THE HOUR OF \_\_\_\_\_ O'CLOCK \_\_\_\_\_ M. IN BOOK \_\_\_\_\_ PAGE(S) OF MAPS OF ASSESSMENT AND COMMUNITY FACILITIES DISTRICTS, IN THE OFFICE OF THE COUNTY RECORDER, IN THE COUNTY OF RIVERSIDE, STATE OF CALIFORNIA.

FILED BY \_\_\_\_\_ NO. \_\_\_\_\_ RIVERSIDE COUNTY ASSESSOR-CLERK-RECORDER

BY \_\_\_\_\_ DEPUTY

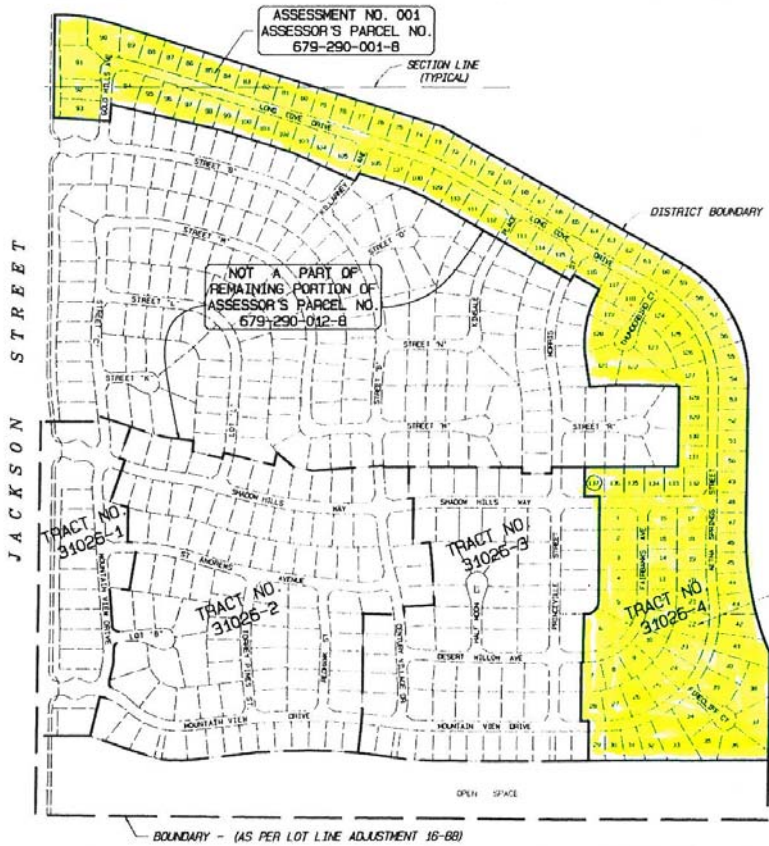
FILED IN THE OFFICE OF THE SUPERINTENDENT OF STREETS OF THE CITY OF INDO THIS \_\_\_\_\_ DAY OF \_\_\_\_\_, 2003

SUPERINTENDENT OF STREETS, CITY OF INDO, STATE OF CALIFORNIA

AN ASSESSMENT WAS LEVIED BY THE CITY COUNCIL OF THE CITY OF INDO ON THE LOTS, PIECES, AND PARCELS OF LAND SHOWN ON THIS ASSESSMENT DIAGRAM ON THE \_\_\_\_\_ DAY OF \_\_\_\_\_, 2003 SAID ASSESSMENT DIAGRAM AND THE ASSESSMENT ROLL WERE RECORDED IN THE OFFICE OF THE SUPERINTENDENT OF STREETS ON THE \_\_\_\_\_ DAY OF \_\_\_\_\_, 2003 REFERENCE IS MADE TO THE ASSESSMENT ROLL RECORDED IN THE OFFICE OF THE SUPERINTENDENT OF STREETS FOR THE EXACT AMOUNT OF EACH ASSESSMENT LEVIED AGAINST EACH PARCEL OF LAND SHOWN ON THE ASSESSMENT DIAGRAM.

FILED IN THE OFFICE OF THE CITY CLERK OF THE CITY OF INDO, STATE OF CALIFORNIA, THIS \_\_\_\_\_ DAY OF \_\_\_\_\_, 2003

CITY CLERK OF THE CITY OF INDO, STATE OF CALIFORNIA



ASSESSMENT NO. 001  
ASSESSOR'S PARCEL NO.  
679-290-001-B

NOT A PART OF  
REMAINING PORTION OF  
ASSESSOR'S PARCEL NO.  
679-290-012-B

| TRACT     | LOTS     |
|-----------|----------|
| T-31026-4 | 137 LOTS |

ASSESSMENT NO. 002  
ASSESSOR'S PARCEL NO.  
679-290-012-B



**ALBERT A. WEBB**  
ASSOCIATES  
ENGINEERING CONSULTANTS

THIS ASSESSMENT DIAGRAM CORRECTLY SHOWS EACH SEPARATE LOT OR PARCEL OF LAND INCLUDED WITHIN THE BOUNDARIES OF THE ASSESSMENT DISTRICT. FOR DETAILS CONCERNING THE LINES AND DIMENSIONS OF LOTS OR PARCELS REFER TO THE COUNTY ASSESSOR'S MAPS FOR FISCAL YEAR 2002-2003.