

ASSESSMENT DIAGRAM FOR ASSESSMENT DISTRICT NO. 2003-5 (SUNBURST)

CITY OF INDIO, COUNTY OF RIVERSIDE, STATE OF CALIFORNIA

RECORDED THIS _____ DAY OF _____, 2003 AT THE HOUR OF _____ O'CLOCK _____ M IN BOOK _____ PAGES _____ OF MAPS OF ASSESSMENT AND COMMUNITY FACILITIES DISTRICTS, IN THE OFFICE OF THE COUNTY RECORDER, IN THE COUNTY OF RIVERSIDE, STATE OF CALIFORNIA.

FILE NO. _____
GARY L. ORSO, RIVERSIDE COUNTY ASSESSOR-CLERK-RECORDER

BY _____ DEPUTY

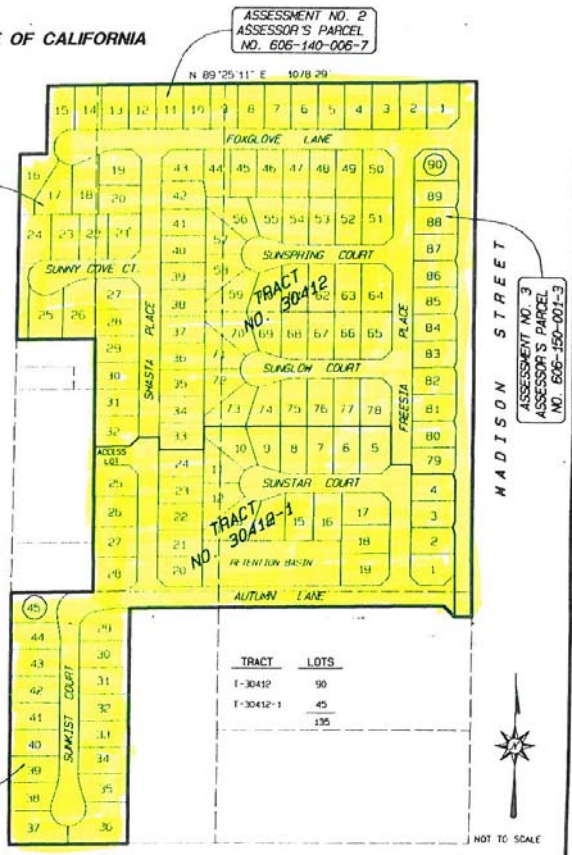
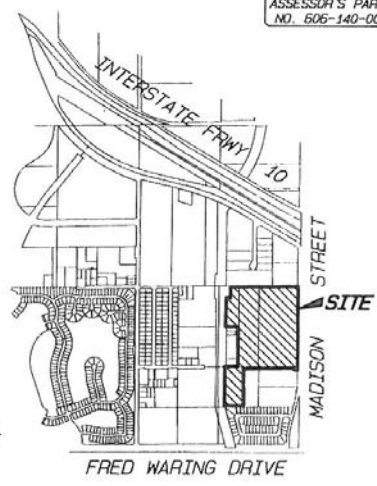
FILED IN THE OFFICE OF THE SUPERINTENDENT OF STREETS OF THE CITY OF INDIO THIS _____ DAY OF _____, 2003.

SUPERINTENDENT OF STREETS, CITY OF INDIO,
STATE OF CALIFORNIA

AN ASSESSMENT WAS LEVIED BY THE CITY COUNCIL OF THE CITY OF INDIO ON THE LOTS, PIECES, AND PARCELS OF LAND SHOWN ON THIS ASSESSMENT DIAGRAM ON THE _____ DAY OF _____, 2003. SAID ASSESSMENT DIAGRAM AND THE ASSESSMENT ROLL WERE RECORDED IN THE OFFICE OF THE SUPERINTENDENT OF STREETS ON THE _____ DAY OF _____, 2003. REFERENCE IS MADE TO THE ASSESSMENT ROLL RECORDED IN THE OFFICE OF THE SUPERINTENDENT OF STREETS FOR THE EXACT AMOUNT OF EACH ASSESSMENT LEVIED AGAINST EACH PARCEL OF LAND SHOWN ON THE ASSESSMENT DIAGRAM.

FILED IN THE OFFICE OF THE CITY CLERK OF THE CITY OF INDIO, STATE OF CALIFORNIA THIS _____ DAY OF _____, 2003.

CITY CLERK OF THE CITY OF INDIO, STATE OF CALIFORNIA



ALBERT A. WEBB ASSOCIATES
ENGINEERING CONSULTANTS

THIS ASSESSMENT DIAGRAM CORRECTLY SHOWS EACH SEPARATE LOT OR PARCEL OF LAND INCLUDED WITHIN THE BOUNDARIES OF THE ASSESSMENT DISTRICT. FOR DETAILS CONCERNING THE LINES AND DIMENSIONS OF LOTS OR PARCELS REFER TO THE COUNTY ASSESSOR'S MAPS FOR FISCAL YEAR 2002-2003.

NOT TO SCALE
M.O. 03-0366