

55  
22

# ASSESSMENT DIAGRAM FOR ASSESSMENT DISTRICT NO. 2003-3 ( INDIAN PALMS COUNTRY CLUB ) CITY OF INDIO, COUNTY OF RIVERSIDE, STATE OF CALIFORNIA

RECORDED THIS 12<sup>th</sup> DAY OF November, 2003 AT THE HOUR OF  
2:00 O'CLOCK A.M. IN BOOK 55 PAGES 22-25 OF MAPS OF ASSESSMENT  
AND COMMUNITY FACILITIES DISTRICTS, IN THE OFFICE OF THE COUNTY  
RECORDER, IN THE COUNTY OF RIVERSIDE, STATE OF CALIFORNIA.

FEE: \$13.00 NO: 2003-891357  
GARY L. ORSO, RIVERSIDE COUNTY ASSESSOR-CLERK-RECORDER

BY: [Signature]  
DEPUTY

FILED IN THE OFFICE OF THE SUPERINTENDENT OF STREETS OF  
THE CITY OF INDIO THIS 5 DAY OF NOV., 2003.

[Signature]  
SUPERINTENDENT OF STREETS, CITY OF INDIO,  
STATE OF CALIFORNIA

AN ASSESSMENT WAS LEVIED BY THE CITY COUNCIL OF THE CITY OF  
INDIO ON THE LOTS, PIECES, AND PARCELS OF LAND SHOWN  
ON THIS ASSESSMENT DIAGRAM ON THE 5<sup>th</sup> DAY OF November, 2003.  
SAID ASSESSMENT DIAGRAM AND THE ASSESSMENT ROLL WERE RECORDED  
IN THE OFFICE OF THE SUPERINTENDENT OF STREETS ON THE 5<sup>th</sup> DAY  
OF November, 2003. REFERENCE IS MADE TO THE ASSESSMENT ROLL  
RECORDED IN THE OFFICE OF THE SUPERINTENDENT OF STREETS FOR  
THE EXACT AMOUNT OF EACH ASSESSMENT LEVIED AGAINST EACH PARCEL  
OF LAND SHOWN ON THE ASSESSMENT DIAGRAM.

FILED IN THE OFFICE OF THE CITY CLERK OF THE CITY OF INDIO,  
STATE OF CALIFORNIA THIS 5<sup>th</sup> DAY OF November, 2003  
[Signature]  
CITY CLERK OF THE CITY OF INDIO, STATE OF CALIFORNIA

### LEGEND

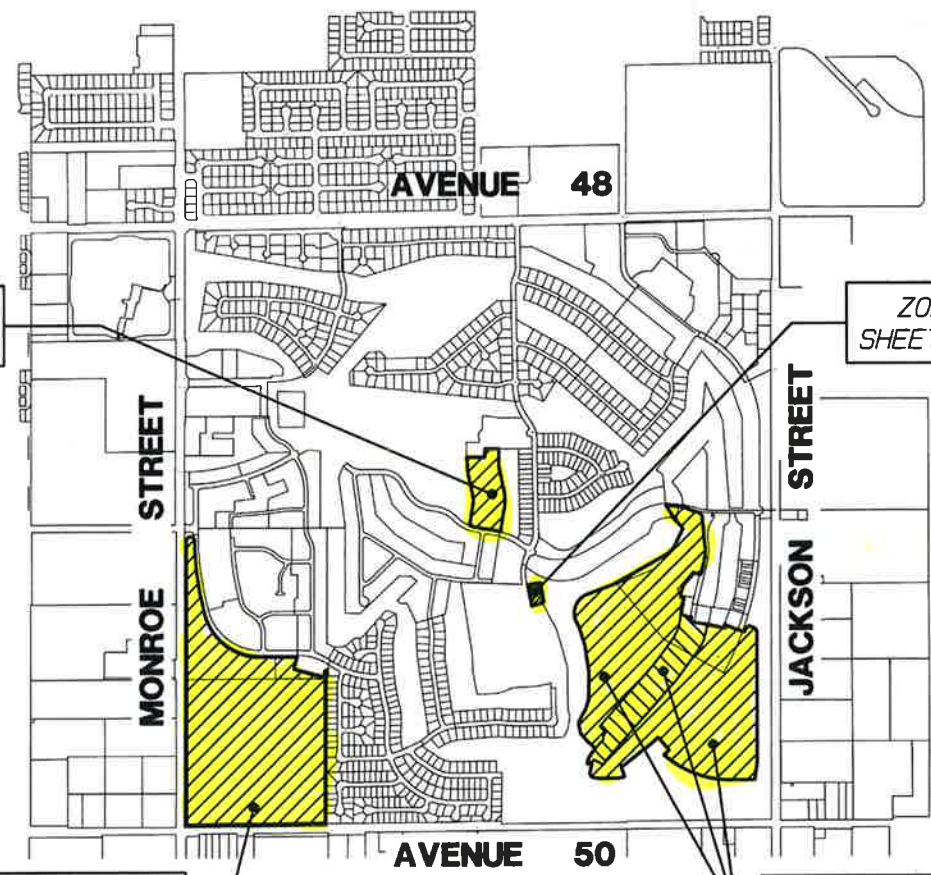
ZONE 1	TR 30501-1, -2, -3	(255 LOTS)
ZONE 2	TR 30930	(3 LOTS)
ZONE 3	TR 30500-1	(27 LOTS)
ZONE 4	TR 30452	(229 LOTS)

ZONE 3  
SHEET NO. 3

ZONE 2  
SHEET NO. 3

ZONE 4  
SHEET NO. 4

ZONE 1  
SHEET NO. 2



### VICINITY MAP

N.T.S.

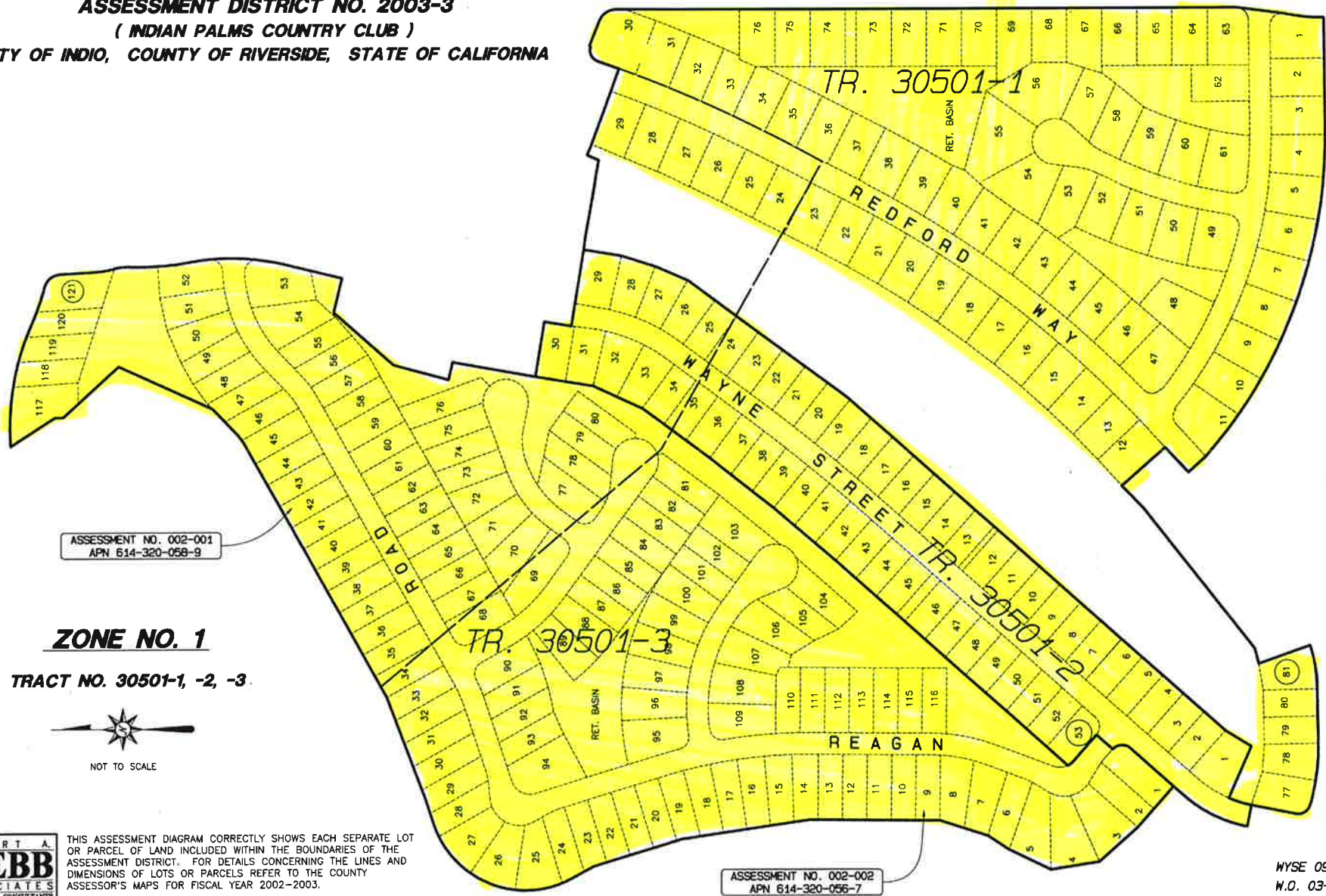


THIS ASSESSMENT DIAGRAM CORRECTLY SHOWS EACH SEPARATE LOT OR PARCEL OF LAND INCLUDED WITHIN THE BOUNDARIES OF THE ASSESSMENT DISTRICT. FOR DETAILS CONCERNING THE LINES AND DIMENSIONS OF LOTS OR PARCELS REFER TO THE COUNTY ASSESSOR'S MAPS FOR FISCAL YEAR 2002-2003.

55  
29

COPY

**ASSESSMENT DIAGRAM FOR**  
**ASSESSMENT DISTRICT NO. 2003-3**  
 ( INDIAN PALMS COUNTRY CLUB )  
 CITY OF INDIO, COUNTY OF RIVERSIDE, STATE OF CALIFORNIA



ASSESSMENT NO. 002-001  
 APN 614-320-058-9

**ZONE NO. 1**

**TRACT NO. 30501-1, -2, -3**



NOT TO SCALE

ALBERT A.  
**WEBB**  
 ASSOCIATES  
 ENGINEERING CONSULTANTS

THIS ASSESSMENT DIAGRAM CORRECTLY SHOWS EACH SEPARATE LOT OR PARCEL OF LAND INCLUDED WITHIN THE BOUNDARIES OF THE ASSESSMENT DISTRICT. FOR DETAILS CONCERNING THE LINES AND DIMENSIONS OF LOTS OR PARCELS REFER TO THE COUNTY ASSESSOR'S MAPS FOR FISCAL YEAR 2002-2003.

ASSESSMENT NO. 002-002  
 APN 614-320-056-7

WYSE 099  
 W.O. 03-0185

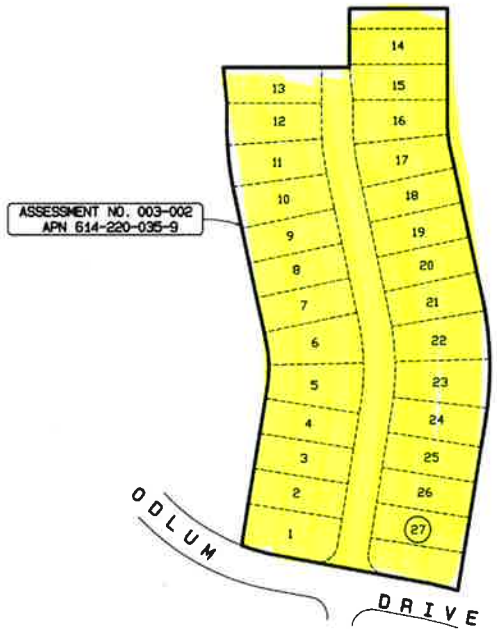
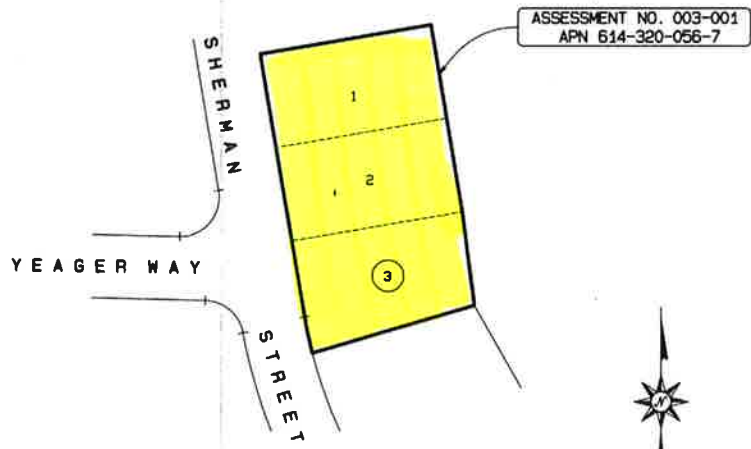
COPY

55  
24

**ASSESSMENT DIAGRAM FOR**  
**ASSESSMENT DISTRICT NO. 2003-3**  
 ( INDIAN PALMS COUNTRY CLUB )  
 CITY OF INDIO, COUNTY OF RIVERSIDE, STATE OF CALIFORNIA

**ZONE NO. 2**  
**TRACT NO. 30930**

**ZONE NO. 3**  
**TRACT NO. 30500-1**



ALBERT A.  
**WEBB**  
 ASSOCIATES  
 ENGINEERING CONSULTANTS

THIS ASSESSMENT DIAGRAM CORRECTLY SHOWS EACH SEPARATE LOT OR PARCEL OF LAND INCLUDED WITHIN THE BOUNDARIES OF THE ASSESSMENT DISTRICT. FOR DETAILS CONCERNING THE LINES AND DIMENSIONS OF LOTS OR PARCELS REFER TO THE COUNTY ASSESSOR'S MAPS FOR FISCAL YEAR 2002-2003.

WYSE 099  
 W.O. 03-0185

copy 55/25

# ASSESSMENT DIAGRAM FOR ASSESSMENT DISTRICT NO. 2003-3 ( INDIAN PALMS COUNTRY CLUB ) CITY OF INDIO, COUNTY OF RIVERSIDE, STATE OF CALIFORNIA

**ZONE NO. 4**  
**TRACT NO. 30452**



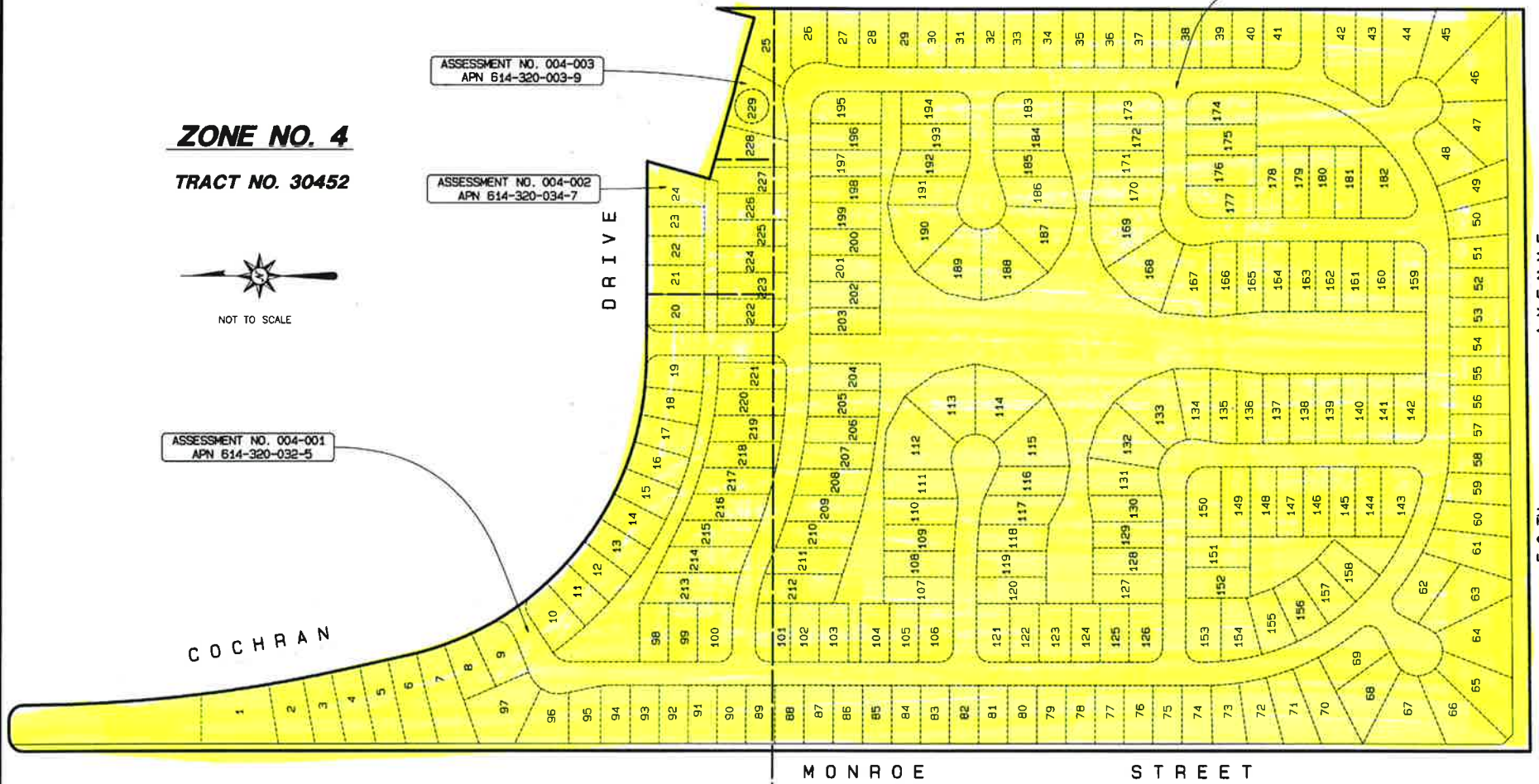
NOT TO SCALE

ASSESSMENT NO. 004-001  
APN 614-320-032-5

ASSESSMENT NO. 004-003  
APN 614-320-003-9

ASSESSMENT NO. 004-002  
APN 614-320-034-7

ASSESSMENT NO. 004-004  
APN 614-320-004-0



ALBERT A.  
**WEBB**  
ASSOCIATES  
ENGINEERING CONSULTANTS

THIS ASSESSMENT DIAGRAM CORRECTLY SHOWS EACH SEPARATE LOT OR PARCEL OF LAND INCLUDED WITHIN THE BOUNDARIES OF THE ASSESSMENT DISTRICT. FOR DETAILS CONCERNING THE LINES AND DIMENSIONS OF LOTS OR PARCELS REFER TO THE COUNTY ASSESSOR'S MAPS FOR FISCAL YEAR 2002-2003.

WYSE 099  
W.O. 03-0185