

**ASSESSMENT DIAGRAM FOR
ASSESSMENT DISTRICT NO. 2003-2
CITY OF INDIO, COUNTY OF RIVERSIDE,
STATE OF CALIFORNIA**

SHEET 3 OF 4 SHEETS

ZONE NO. 2
TENTATIVE TRACT NO. 31358

ASSESSOR'S PARCEL NUMBERS:

- 606-160-024-5
- 606-160-013-5
- 606-130-004-4
- 606-130-006-6
- 606-130-011-0

ASSESSMENT NO. 003-0001
ASSESSOR'S NO. 606-130-004-4

ASSESSMENT NO. 003-0002
ASSESSOR'S NO. 606-130-006-6

ASSESSMENT NO. 003-0005
ASSESSOR'S NO. 606-160-013-5

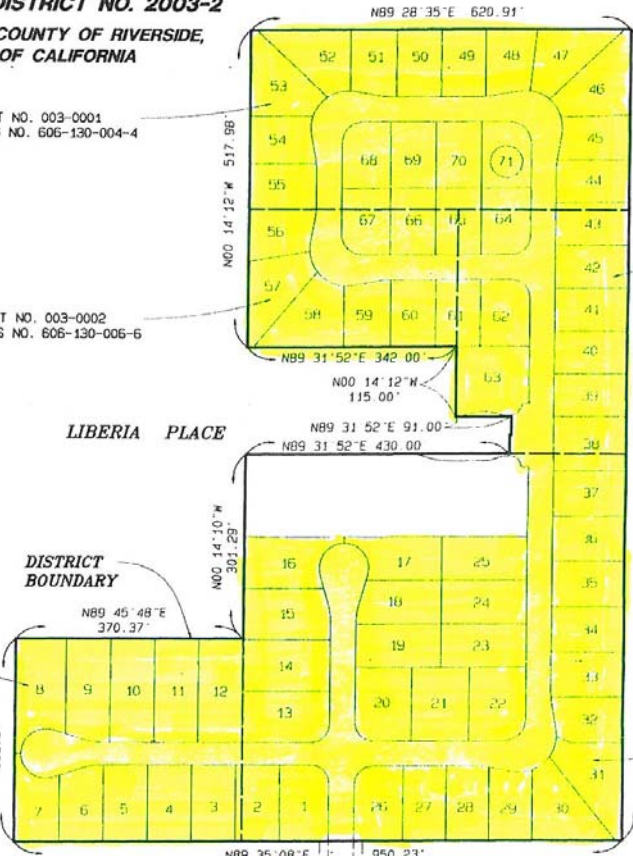
ASSESSMENT NO. 003-0003
ASSESSOR'S NO. 606-130-011-0

ASSESSMENT NO. 003-0004
ASSESSOR'S NO. 606-160-024-5

LIBERIA PLACE

**DISTRICT
BOUNDARY**

ALL AMERICAN CANAL



**ALBERT A.
WEBB
ASSOCIATES
ENGINEERING CONSULTANTS**

THIS ASSESSMENT DIAGRAM CORRECTLY SHOWS EACH SEPARATE LOT OR PARCEL OF LAND INCLUDED WITHIN THE BOUNDARIES OF THE ASSESSMENT DISTRICT. FOR DETAILS CONCERNING THE LINES AND DIMENSIONS OF LOTS OR PARCELS REFER TO THE COUNTY ASSESSOR'S MAPS FOR FISCAL YEAR 2002-2003.

ASSESSMENT DISTRICT 2002-3
ZONE 3

M.O. 03-0176