

ASSESSMENT DIAGRAM FOR ASSESSMENT DISTRICT NO. 2003-1

SHEET 1 OF 1 SHEET

(SHADOW HILLS - MASTER PLAN - PHASE 1)

CITY OF INDIO, COUNTY OF RIVERSIDE, STATE OF CALIFORNIA

RECORDED THIS _____ DAY OF _____, 2003 AT THE HOUR OF _____ O'CLOCK _____ IN BOOK _____ OF MAPS OF ASSESSMENT AND COMMUNITY FACILITIES DISTRICTS, IN THE OFFICE OF THE COUNTY RECORDER, IN THE COUNTY OF RIVERSIDE, STATE OF CALIFORNIA.

FEE: _____ NO: _____
GARY L. ORSO, RIVERSIDE COUNTY ASSESSOR-CLERK-RECORDER

BY _____ DEPUTY

FILED IN THE OFFICE OF THE SUPERINTENDENT OF STREETS OF THE CITY OF INDIO THIS _____ DAY OF _____, 2003

SUPERINTENDENT OF STREETS, CITY OF INDIO,
STATE OF CALIFORNIA

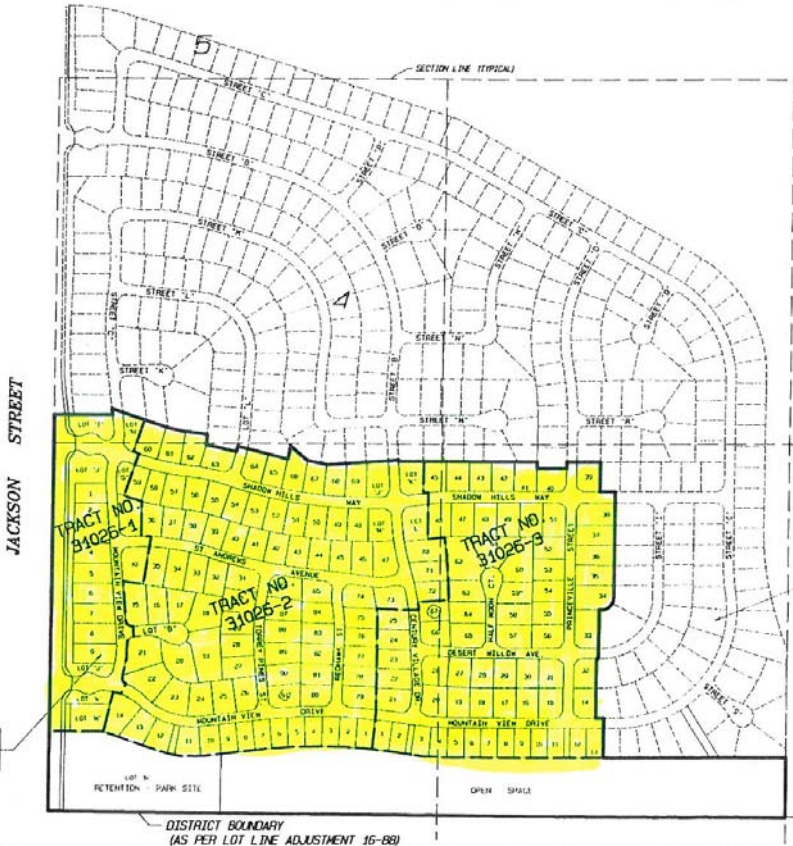
AN ASSESSMENT WAS LEVIED BY THE CITY COUNCIL OF THE CITY OF INDIO ON THE LOTS, PIECES, AND PARCELS OF LAND SHOWN ON THIS ASSESSMENT DIAGRAM ON THE _____ DAY OF _____, 2003 SAID ASSESSMENT DIAGRAM AND THE ASSESSMENT ROLL WERE RECORDED IN THE OFFICE OF THE SUPERINTENDENT OF STREETS ON THE _____ DAY OF _____, 2003. REFERENCE IS MADE TO THE ASSESSMENT ROLL RECORDED IN THE OFFICE OF THE SUPERINTENDENT OF STREETS FOR THE EXACT AMOUNT OF EACH ASSESSMENT LEVIED AGAINST EACH PARCEL OF LAND SHOWN ON THE ASSESSMENT DIAGRAM.

FILED IN THE OFFICE OF THE CITY CLERK OF THE CITY OF INDIO, STATE OF CALIFORNIA THIS _____ DAY OF _____, 2003

CITY CLERK OF THE CITY OF INDIO, STATE OF CALIFORNIA



ASSESSMENT NO. 001
ASSESSMENT PARCEL NO.
679-300-001-B



TRACT	LOTS
T-31026-1	11 LOTS
T-31026-2	91 LOTS
T-31026-3	67 LOTS
TOTAL	169 LOTS

ASSESSMENT NO. 002
ASSESSMENT PARCEL NO.
679-300-002-9



ALBERT A. WEBB ASSOCIATES
ENGINEERING CONSULTANTS

THIS ASSESSMENT DIAGRAM CORRECTLY SHOWS EACH SEPARATE LOT OR PARCEL OF LAND INCLUDED WITHIN THE BOUNDARIES OF THE ASSESSMENT DISTRICT. FOR DETAILS CONCERNING THE LINES AND DIMENSIONS OF LOTS OR PARCELS REFER TO THE COUNTY ASSESSOR'S MAPS FOR FISCAL YEAR 2002-2003.

NYSE 095
M.D. 03-0020